

Activation

Activate your account prior to installing your tracking device.

Visit www.LiveViewGPS.com and choose the "Activate" link at the top right of the site.

Select The "Flash Trac ATEQ" link at the bottom of the page. This process takes about 3 minutes.

Activations are done from 8 am - 4 pm PST. Once your activation has been processed we will email you your username/password and URL for login. The entire process can take between 1 - 3 hours.

All activations are billed on a pro-rated term for the current month of service. We will auto-bill you on the first of every month.

If you wish to cancel, please submit your request to us no later than the 25th day of the month you wish to discontinue service. A service cancellation form is available at www.LiveViewGPS.com - top right of site "Cancel".

Powered Asset / Equipment Installation

Installation of your LiveViewGPS - Flash Trac ATEQ is as easy as it gets - just follow these simple steps.

Wiring and installation guidelines. The Flash ATEQ requires a standard 3-wire installation to operate effectively.

Color	Signal/Desc.	In - Out
Red	12 VDC constant	
Black	Ground	
White	Ignition	
Blue	Input 1 - Bias Low	In - 1
Orange	Input 2 - Bias High	In - 2
Green	Output 1 / Starter	Out - 1
Brown	Output 2	Out - 2
Yellow	Output 3	Out - 3

The **Red Wire** (Power) should be directly wired to a constant power source found under the dash. Do not wire to vehicle accessories like Radios, Cigarette Lighters, etc. but directly to the key cylinder or main steering column power found in the Ignition Wiring Harness. This connection point should be fuse protected to not more than 5 Amps.

The **Black Wire** (Ground) should be securely fastened to a grounded screw under the dash.

The **White Wire** (Ignition) is the Ignition Event wire that is best installed directly to the Ignition Wire which extends the length of the steering column and is best connected where the dash and steering column meet. All makes and models of vehicles are different. For that reason, we recommend visiting <http://www.the12volt.com> prior to installing the device to learn your particular vehicle's Constant & Ignition wires and their specific color(s). Ensure that power to the ignition wire is available ONLY when the vehicle ignition is turned on.

The **Blue** and **Orange** wires are Input wires and can be used to monitor a variety of electronic equipment. Alerts can be set on the interface to notify of on/off events. The BLUE wire will trigger when it senses ground. The ORANGE wire will trigger when it senses 12v positive.

The **Green, Brown** and **Yellow** wires are output wires and can be used for enable / disabling the starter, etc.

Input and output function will only work when the ATEQ is connected to external power.

White/Blue wire is a 1-Bit Bus Data Line, configured to work with LVGPS Temperature sensor, Part # FLASH-ATEQ-TEMP-SENSOR. When temperature sensor is connected, it will report temperature reading each time device sends an event, i.e. ignition on/off, start, stop, motion, etc.

To connect temperature sensor, Blue and Black wire from sensor must connect to ground. White wire from temp sensor connects to white/blue wire on Flash ATEQ.

Status LED's to indicate service



Status LED lights (**Green & Red**) on the front of the Flash ATEQ device can provide valuable information about the operation of the unit. When possible, install the unit in such a way that these lights can be seen with reasonable ease for future troubleshooting.

After installing the unit, and prior to securing under the dash area, make sure the unit has a solid Green light and a blinking Red light that goes solid for 4 seconds, then repeats the pattern. See table (next page) for troubleshooting when one, or both, does not occur.

Condition	LED 1 (Orange) Comm LED	LED 2 (Green) GPS
Modem off	Off	
Cell search	Slow blink	
Network available	Fast blink	
Registered but no acknowledgement	Alternates from Solid to Fast Blink	
Registered and recv'd acknowledgement	Solid	
GPS off		Off
GPS on		Slow blink
GPS time sync		Fast blink
GPS fix		Solid

GPS/GSM Combo Antenna When Installing Unit



The Flash ATEQ uses an internal antenna for both GPS and CDMA (cellular) signals. The antennas are located on the right hand side of the unit when looking at the front.

When installing, it is more important to consider GPS performance over cellular performance. GPS signal strengths are much lower than typical cellular networks supported by the Flash ATEQ.

To begin viewing the vehicle's location, simply go to www.LiveViewGPS.com and select the Login link at the top of the page and then select > Flash Trac.

The Flash ATEQ when connected to external power, will transmit its location every 60 minutes when ignition is off and every 10 minutes when moving. When disconnected from external power, it will update its location every 5 minutes when moving, and once a day when stopped. The Flash ATEQ will also report its start and stop location when it detects motion.

Installation Hardware

Covert Mounting Hardware (Not Included)

(2x) 8/32" Stainless P.E.M. self clinching studs
(2x) Serrated Flange Nuts



Or,

Nose Mounting Hardware (Not Included)

(2x) #10 3/4" TEK self-drilling screws



Dry Van Trailer Covert Installation

Mounting The Device:

With the device positioned upside-down, inside the coupler plate, with the top of the device clearly visible from below, drill 2 pilot holes through the device's mounting flange holes through the underside of the trailer floor using a 5/16" drill bit.

From inside the trailer, use a punch to drive an 8/32" P.E.M. self clinching stud through each of the pilot holes.

Secure the device to the studs using the washers and serrated flange nuts from the covert mounting kit.

Running The Wire Harness:

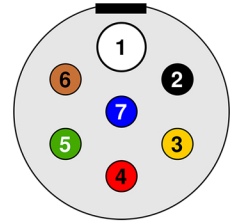
Remove the bolts that secure the 7-way housing's cover onto the housing before pulling the cover away from the housing.

Place the device harness between the coupler plate and the floor of the trailer, through the front, driver side access hole.

Feed the device harness through to the access hole directly under the 7-way housing on the forward bulkhead.

SAE J560 7-Pin Trailer Connector:

1 - Ground. BLACK Wire on ATEQ.
7 - Aux Power. RED Wire on ATEQ.
6 - Tail Lamps. WHITE wire on ATEQ.

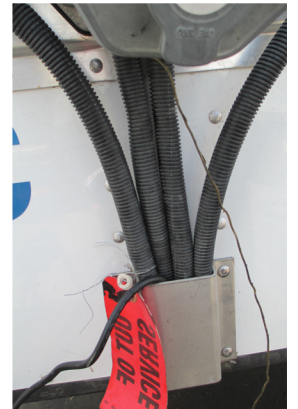


(continued) Tie a fish line to the end of the device harness and pull it through access hole under the cable channel below the 7-way housing

Use the same fish line to pull the device harness through the cable channel and into the 7-way housing following the path of the J560 harness.

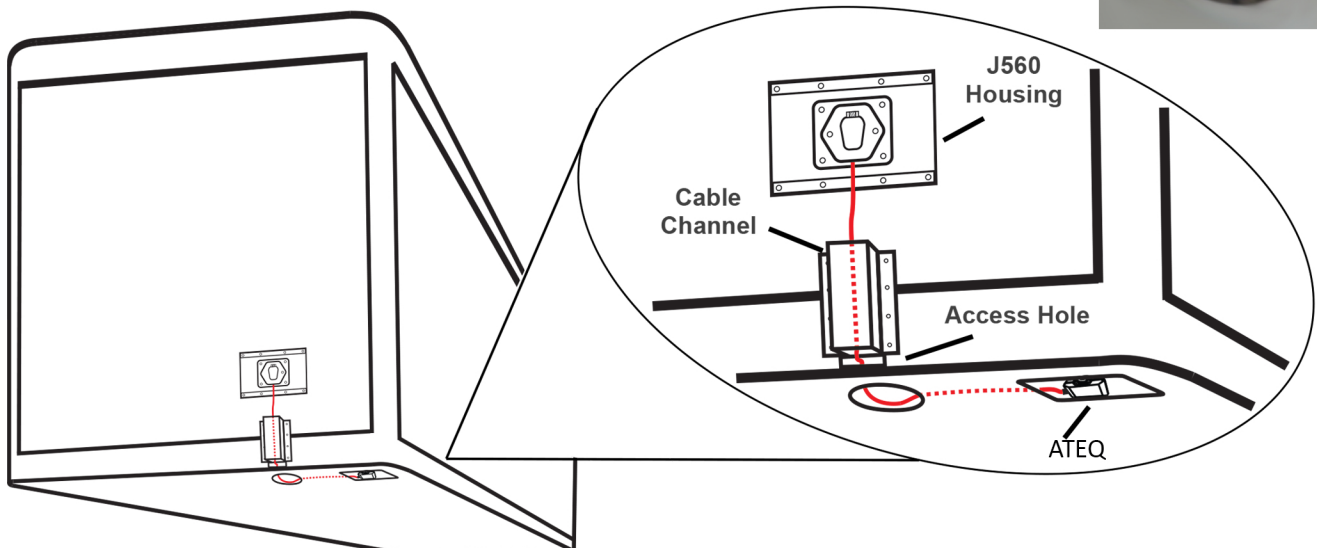
Add ATEQ device harness to J560 wire looms.

Connect Red, Black and White wire from ATEQ to J560 connector, as listed above. Cover all unused wires with electrical tape.



Important Note:

ENSURE THE TOP OF THE ATEQ faces down towards the ground.



Dry Van - Nose Mount Installation

Mounting The Device:

Place the device, harness side down, on the forward-facing bulkhead above the J560 housing.

Secure the device to the bulkhead using two self-tapping screws.

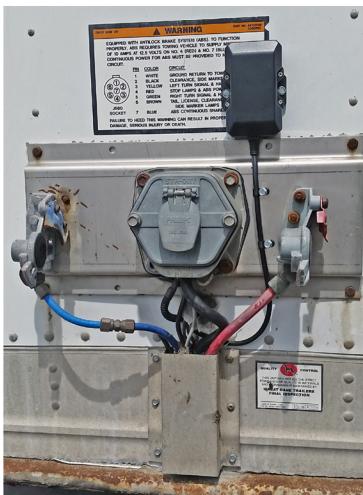


Running The Wire Harness:

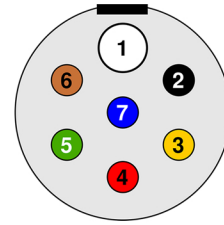
Remove the bolts that secure the 7-way housing's cover onto the housing before pulling the cover away from the housing.

Choose the best of the following device harness routing options for your application:

- Drill a hole in the trailer, close to the 7-way, and run to the back of the J560
- Run alongside the trailer harness through the 7-way housing's stock cable grommet.



SAE J560 7-Pin Trailer Connector:



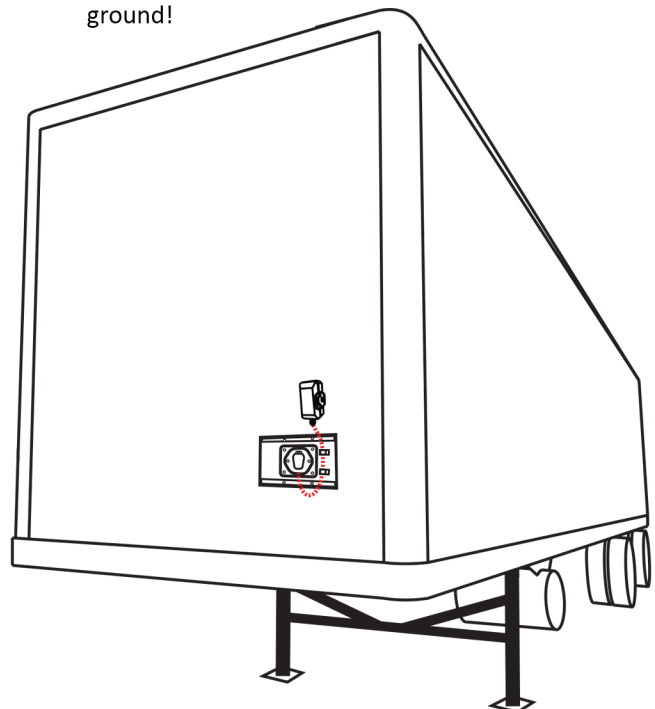
- 1 - Ground. BLACK Wire on ATEQ.
- 7 - Aux Power. RED Wire on ATEQ.
- 6 - Tail Lamps. WHITE wire on ATEQ.

Install Cable Clamps to be sure the wire harness is secured to the trailer.

Connect Red, Black and White wire from ATEQ to J560 connector, as listed above.

Important Note:

Ensure the harness side of the device faces the ground!



Device Specifications

Dimensions	2.15" x 4.33"x1.59"
Operating Temperature	-30° C to +75° C (-22F to +158F)
Power Source	9- 32 Volts DC - 5.2 AH Li-on re-chargeable backup battery
Typical full-power current	70mA at 12 Volts DC
CDMA	1XRTT 850/1800 - US VERIZON WIRELESS
Communication Protocol	SMS, CDMA (UDP)
Update Frequency	Connected to External Power: 10 minutes when moving/Hourly When Ignition Off
Binary I/O	3 output and 2 input - 1 Wire Temp Sensor Available
Antenna	Internal dual-mode CDMA/GPRS+GPS
Notifications	Live Alerts
Historical Playback	365 days of historical data
Reporting	Start/Stop Report, Landmark, Alerts and more...
Diagnostics	Diagnostics via SMS or TCP diagnostic messages
Applications	Trailer Tracking, Powered Assets
Shock and Vibration	US Military Standards 202G and 810F,SAEJ1455

Technical Support

Please contact us toll free [1-888-544-0494](tel:1-888-544-0494) or direct at [1-661-294-6805](tel:1-661-294-6805), Monday Through Friday From 7 am - 5 pm PST.

You can also email:
info@liveviewgps.com
for any support questions.

