

RTV5/PT-10 Web User Guide

1. Authorization Tab – Enter Username/Password To Login



Enter Your Assigned Username In The “Login ID” Field. Enter Your Assigned Password In The Password Field

2. Map Control Tab



Map Control Tab - This tab allows you to track their vehicles from different map views, angles, and degree of zoom. The “Center Map” and “Optimize Zoom” features allow the user to automatically follow a vehicle on the map hands free. The “Show Traffic” feature overlays traffic flow of major highways and metropolitan areas. “Birds Eye” view may not be available in certain areas.

3. Vehicles Tab



Vehicles tab – This tab allows you to select which individual or group of vehicles they wish to show on the map. You can create groups of vehicles from the group editor button, as well as assign drivers to vehicles from the driver editor button.

4. Mouse Over Vehicles On Screen



Mouse Over Vehicles – Displays current vehicle data. speed, lat/long, heading, last moved time/date, last update time date, ignition or power status and number Of GPS Satellites In View. (This display shows when you hover your mouse over any of your vehicles on screen, it shows for 2-3 seconds)

5. Reports: Online Or Emailed (Excel Format)



Standard Report – This feature allows the user to chart the activity of a given vehicle throughout the course of any given day within the most recent 90 days. The user will simply click on the tab, select a vehicle from the dropdown, select a date, and generate the report. The report will show, date, time of day, Lat and Lon (converted to physical address by clicking on lat and lon coordinates), miles-per-hour and heading. The frequency of report results will depend on the user's monthly service plan.

Enhanced Report – This feature allows the user to "customize" a standard report to their specific requirements. With the Enhanced Report, you can select a certain time period of the day and to what frequency the reports information is generated.

Start/Stop Report – This feature allows the user to see when a vehicle comes to a stop, how long that vehicle is stopped, and when the vehicle moves again. This feature will tabulate total time throughout the given time period that the selected vehicle is stopped or moving. The user can "customize" this report much like the Enhanced Report.

Aggressive Driving Report – This feature allows the user to set a speed change threshold for a given vehicle during a 10 second period. For example, if the user sets the speed change at 60 mph, a report will generate every time speed is increased or decreased by 60 mph during any 10 second time period. This is a great report to monitor unnecessary fuel consumption and vehicle wear and tear.

Excessive Idling Report – This feature allows the user to see when a vehicle is idling for an excessive length of time. The user will set the parameters according to their own definition of excessive time. For example, if the user sets the idle time at 10 minutes, a report will be generated every time the vehicle exceeds idling for that length of time. The report will show time of day, lat and lon (convertible to physical address), and total period of idling time.

Vehicle Mileage Report – This feature will simply tabulate mileage for a given vehicle for the selected date.

PTO Sensor Report – This report will tell when a switch was turned on or off. For example, on a dump truck, a switch can be hooked up to the sensor which activates the raising or lowering of the bed. If a switch is in place, a report will be generated every time the bed is raised or lowered.

Speeding Report – This report will tell when a vehicle exceeded a speed threshold during that given day. Speed limit is determined by the account user.

Vapor Report – This report will tell when a vehicle, which has the input wires (optional) hooked up and will lay down a vapor trail when those PTO's are engaged. For instance, if a snow plow were to have an input connected to the blade engaging power source, a vapor trail would be laid down over the streets that had been plowed that particular day.

E-mailed reports – Reports that can be sent to an e-mail address for printing. This features many of the same reports as the on-line variety including a "Mileage by State" report for commercial applications that cross state lines and need this type of information for tax purposes.

6. Alert System



Click "Show Alert Editor" To Open Alert Editor Window.

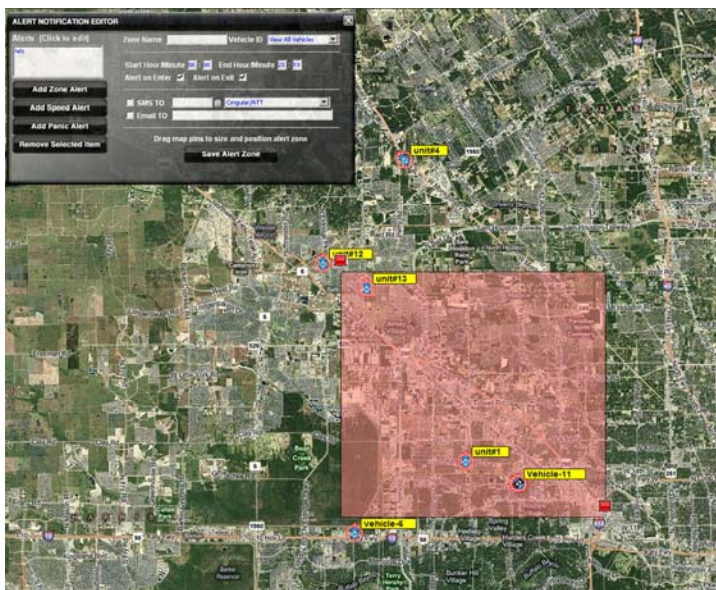


This Will Display The Alert Notification Editor

Click Tabs To Select The Type Of Alert You Wish To Configure:

- Zone Alert** – This feature allows the user to set up a virtual fence around a certain area and receive e-mail or text message alerts every time a vehicle enters or exits the area. Users can have up to 20 separate fences for any given account.
- Speed Alert** – This feature will notify the user via e-mail or text message when a vehicle exceeds a specified rate of speed. For example, if the user sets the MPH on the speed alert at 75, they will be notified every time a vehicle exceeds that speed.
- Panic Alert** – This feature requires a relay switch with the appropriate wire from the harness. When implemented, it allows the driver of the vehicle to hit the panic button and alert via text message or email to a specified person acknowledging there is an issue with the driver and/or passengers.

Setting A Zone Alert:



In The Field "Zone Name": Type A Name For The Zone

Select All Vehicles – Or The Particular Vehicle You Want The Zone To Apply To.

Select The Start Hour/Minute and End Hour/Minute You Want The Zone To be Active. The Default Setting Is Always On.

Check Or Uncheck: Alert On Enter, Alert On Exit To Activate Alerts When Your Vehicles Enters/Exits.

Check SMS if you would like to receive a SMS alert message. Type In Your Cellphone # (Without The 1), Select Your Carrier From The Drop Down.

Check E-mail and enter a e-mail address to have the alert emailed to you.

DRAG THE PINS ON THE MAP TO ZONE OFF YOUR AREA. You can use your mouse' wheel to roll out on the map to select a larger area.

Once Your Zone Has Been Set – Press The Tab Labeled "SAVE ALERT ZONE"



To Set A Speed Alert:

Select "Add Speed Alert"

Select All Vehicles Or Specific Vehicle

In The "Notify When Speed Exceeds" Field, enter the NUMBER in MPH – You Would Like To Be Notified

Check Box For SMS And Enter Cellphone # Select Provider From Drop Down

Same For E-mail If You Would Like E-mail Alerts

Press Button "Save Speed Alert"

7. Left Clicking On A Vehicle On Map: Current Vehicle Data



You Can Change Flag Text, Flag Color And Text Color – Press Save Button To Save Your Changes.

Default Icon: Can Also Be Changed Click The Current Icon, A Window Will Appear – Select Your Icon – By Clicking On One Of The Icons In The Menu - Then Press Save.

Show Address – Displays Current Address Of Vehicle.

The Lock Doors/Unlock Doors, Honk Horn, Disable Starter/Enable Starter & Remote Start Require Hardwire Configuration/Relays–Consult Install Manual For Wiring Diagrams.



8. Search Tab - This allows the user to type in a certain topic and find the nearest locations on the map. For example, if the user types in "fuel", a push pin will be placed on the map everywhere a fuel station is located in that given area. Other information such as phone numbers and address of each location are also provided. Basically, if it can be found in the phone book, it can be found in our system.



9. Directions and

Routing tab – Great for service techs with multi-stop routes. This feature will allow the user to type in a series of addresses and get turn-by-turn directions to each stop. This is a good tool for fuel economy and overall efficiency.



Address Markers tab –

This feature will place a “target” pin on the map for addresses specified by the user.

10. Address Marker Editor



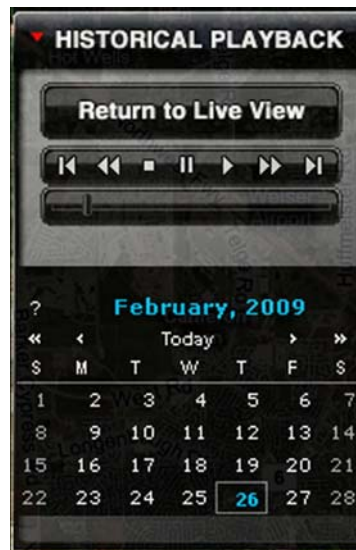
1. Name Your Marker
2. Type In Your Address, City, State, Zip
3. Click Find Lat:Lon
4. Marker Will Appear On Map (Red Bulls eye)
5. Click Save Address

Address Markers Are Useful For Easily Spotting Locations On The Map Interface. Moreover, They Make Setting Zone Alerts A Breeze. For Example, If You Wanted To Set A Zone Alert Around A Specific Address – Set The Address Marker – Then Go to The Alert Editor And Set Your Zone Alert.

11. Live Support tab – Live chat with our tech support team. We offer the best support in the industry right from our corporate offices. Live support is available from 7am to 7pm Monday through Friday and 9am-4pm on Saturday



12. Historical Playback Tab



Historical Playback tab – This feature allows the user to select a date and see the route of any given vehicle during that day. The historical data is stored for up to 90 days.

1. Select Vehicle (From Single Vehicle Drop Down)
2. Select Day From Calendar
3. Press Play To Watch Historical Playback
4. Press Return To Live View To Return To Live Map