

# Vehicle Tracking System VLS-500 (VLS Hardwired Unit)

Spec Sheet

- Installs In Seconds
- Easily Transfer From Vehicle To Vehicle
- Recommended For Teen Drivers Or Small Fleets

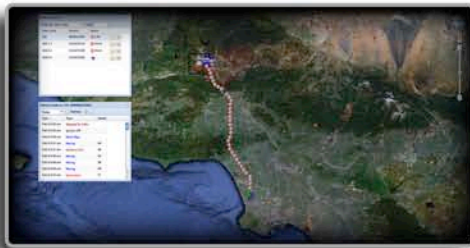


VLS-500

*Note: May not work with all vehicles. [Click here for a complete list of incompatible vehicles.](#)*

## VLS GPS Tracking Screens

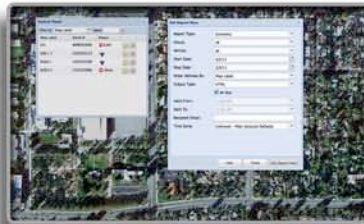
VLS GPS Satellite View



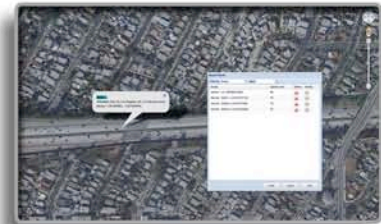
VLS GPS With GeoFence View



VLS GPS Detailed Reports



VLS GPS With Speed Alert View



### PRODUCT SPECIFICATIONS

Frequency Band: 850/1900 MHz  
Transmit Power: 33 dBm@ 850 MHz

#### GPS Specification

- Receiver: 16 channel
- Receiver Sensitivity: -158 dBm
- Accuracy: +/- 2.5m CEP
- Cold Start: <38 sec
- Hot Start: < 3 sec

#### Network Functionality

- Auto-Register to GPRS network
- GPRS Class B, Multi-Slot 10
- Supports TCP, UDP and FTP
- OTA Firmware Upgrade Using FTP
- SMS connectivity

#### OBDII Protocols Supported

- J1850 PWM
- J1850 VPW
- ISO-9141-2
- ISO-14230 KWP2000
- ISO-15765 CAN

#### Power Requirement

- D.C Power 10-16V
- GSM 850 80mA average @12V
- GSM 1900 75mA average @12V

#### Physical Connection

- OBD Connector J1962
- GPS Antenna Integrated
- Cellular Antenna Integrated dual-band (850-1900 MHz)

#### Mechanical

Case Material: ABS plastic  
Dimensions: 1.8" X 1.5" X 1"  
Weight: <2 oz.  
Operating Temperature: -30°C to +75°C

[www.LiveViewGPS.com](http://www.LiveViewGPS.com)