



# GPS TRACKING

2013 Product Catalog

Business  
Security & Surveillance  
Personal Use

## Discover the LiveViewGPS Difference

Our customers often tell us about the life-changing impact our tracking solutions have had. Folks rely on our products, and we don't want to let them down. This keeps us committed to developing and delivering the most effective and reliable tracking devices on the market. It's this commitment that has helped LiveViewGPS build a reputation as the leader in GPS tracking solutions.

As the GPS tracking experts, we've helped thousands of businesses, individual consumers, and law enforcement and government agencies locate people, vehicles and assets with pinpoint accuracy and lightning-fast results.

This unparalleled insight has allowed our customers to increase business productivity and reduce costs, protect loved ones, and help keep our communities safe.

Our comprehensive family of cost-effective tracking solutions utilizes the most advanced GPS technologies, including Google Earth and Microsoft Virtual Earth, to keep you in touch, without interruption. Web management interfaces are easy to use, high-resolution image mapping is standard, and built-in features include real-time updates, 90-day historical playback, customizable reporting and more.

We stand behind our products, our prices *and* our customers. To prove it, we back every purchase with lifetime support and our industry leading money-back guarantee.

Whether you're monitoring employees, assets or a fleet of vehicles, protecting a family member, or conducting covert operations, LiveViewGPS offers powerful, proven tracking you can trust.

### Ordering is Easy with Our New and Improved Catalogue

We're excited to bring you our 2013 guide to LiveViewGPS product selection. Here, we feature our best-selling Live Trac GPS solutions, along with all-new offerings for 2013. You'll find easy access to products and pricing, with convenient, need-to-know feature lists and ordering information to help you get you the answers you need, fast.

You can also visit us online at [www.liveviewgps.com](http://www.liveviewgps.com) to learn more about LiveViewGPS, try a free demo of our GPS tracking platforms, or place an order. Or, pick up the phone and give us a call. Our expert representatives hold deep knowledge of our family of products and their ideal uses. We welcome your questions and will help guide your purchase at every step.

Thanks for considering LiveViewGPS. We look forward to assisting you!

Sincerely,

G. Karonis

George Karonis  
President, LiveViewGPS, Inc.



## What Our Customers Are Saying:

*"Gentlemen, I generally do not write reviews of products. However, this is a product that I feel compelled to review. With some skepticism, I purchased your RTV-5 vehicle tracking system. I was truly surprised to see it update every 10 seconds on my computer. I cannot believe the amount of information your system provides, it is amazing. Thanks for an exceptional product and exceptional service."*

*"On the first day of installing your system on my company's vehicles, I discovered employees who were doing things they were not supposed to be doing. I suspected these things were going on, but never had proof, well I do now, thanks to your system."*

*"You can't place a monetary value on peace of mind... tell you what guys, this is the best money I've ever spent. We have only one child, and sadly he's got the same wild genes I had growing up. At least this helps us temper his behavior with absolute proof. Thanks for a dependable, useful tool!"*

## Table Of Contents:

Welcome To LiveViewGPS.....	2
Live Trac Platform.....	3
Live Trac EZ, RTV-5.....	4
Live Trac G-5, G-5 Pro.....	5
Live Trac RTV-20.....	6
Live Trac PT-10 Series.....	7
Live Trac PT-10 Devices.....	8
VLS Platform.....	9
GPS Alarm, SX1 Satellite Tracker.....	10
DATA Logger, Mobile Phone Locate.....	11



# INTRODUCING THE **LIVE TRAC** PLATFORM

*Internet Based GPS Tracking From Any  
Web Enabled Computer Or Mobile Device*

Unlike other trackers that update in minutes, our powerful, proven Live Trac family of trackers update in real-time, giving you the insight you need in 10 seconds or less, guaranteed! Designed for multiple uses, Live Trac trackers are offered hard-wired or portable for your specific tracking application. Easier to use than a cellphone, Live Trac trackers are the most straightforward and effective tracking devices you'll find.

## **LIVE TRAC IS USED BY:**

- Large & Small Businesses With Mobile Employees &/Or Company Vehicles
- Federal, State & Local Law Enforcement Agencies
- Individual Consumers For Personal Use

## **LIVE TRAC FEATURES:**

- Real-time, 100% Web Based GPS Tracking From Your Computer Or Mobile Device - No Software Required
- Flat-Rate Unlimited System & Tracking Use
- Automatic Text/E-mail Alerts For Speeding, Zones, Routes, Ignition, Vehicle Maintenance & More
- Detailed Reporting - Starts/Stops, Excessive Idling, Aggressive Driving, Mileage, Speeding & More

## **LIVE TRAC SOLUTIONS FOR:**

Business - Increase employee productivity, curtail waste, effectively monitor and verify labor costs, reduce fuel consumption and improve customer service.

Surveillance/Security - Covert tracking for the surveillance expert, executive tracking for the security professional.

Personal Use - Track teen and elderly drivers, monitor family members, find the truth and gain peace of mind.



## **COMPETITIVE EDGE**

1, 5 or 10 Second Position Updates

## **EASY TO USE**

User Friendly & Intuitive Interface

## **NO CONTRACTS**

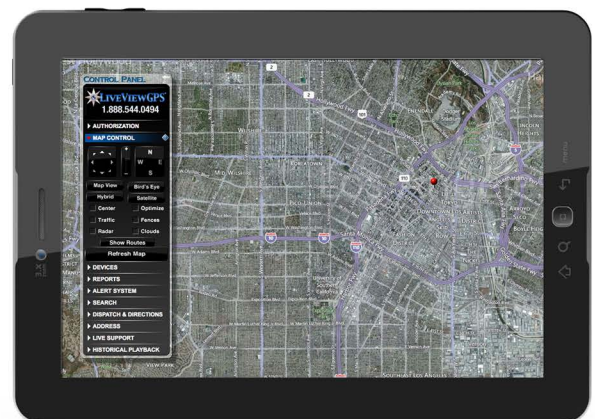
Month To Month Billing

## **SATISFACTION**

Iron Clad Money Back Guarantee

## **SERVICE**

Unparalleled Customer Service & Support



## **All Live Trac Devices Include:**

FREE iPhone®/iPad®/Droid® & Mobile Device Access Using Microsoft Virtual Earth®. Optional iPhone/Droid Mobile Applications Using Google Earth®.\*\*

Comprehensive Technical Support

Free API and custom report development available to qualified clients.

\*\*Mobile devices listed are registered trademarks & owned by each respective company. LiveViewGPS Inc. is in no way affiliated or endorsed by these companies.

## LIVE TRAC EZ VEHICLE TRACKER



**SKU: LT-EZ SALE PRICE: \$169.00**

Unlimited 10 Second Tracking \$29.95 Per Month

Dimensions:	1.8" x 2.118" x 1.08"
Antenna:	Internal
GPS Chipset:	50 Channel Receiver -160 dBm tracking
Power Source:	9 to 16 VDC
Operating Temp:	-22 to 158 Degrees F
Installation:	Plug-N-Play

*Call Us For A Free System Demo  
Today 1-888-544-0494*

### LIVE TRAC EZ FEATURES:

- Plug-N-Play Design Installs In Seconds
- Powered By Vehicle's Electrical System
- Portable - Easily Move From Vehicle To Vehicle

### RECOMMENDED FOR:

- Small Fleets
- Personal Use - Teen & Elderly Drivers, Family Members

**Track It From:** iPhone®, iPad®, Android®, Blackberry®, Windows Mobile™, Or Any Other Compatible HTML5 Mobile Device.\*\*

## LIVE TRAC RTV-5 VEHICLE TRACKER



**SKU: RTV5 SALE PRICE: \$239.00**

Unlimited 10 Second Tracking \$29.95 Per Month

Dimensions:	4.5" x 3.5" x 1.1"
Antenna:	External GPS/GSM Combo
GPS Chipset:	12 Channel Receiver -160 dBm Tracking
Power Source:	8 to 30 VDC
Operating Temp:	-4 to 140 Degrees F
Installation:	Basic 3 Wire

The RTV-5 is one of our first generation GPS tracking devices. It's time-tested and proven reliable on thousands of vehicles and includes an external dual mode GPS/GSM antenna.

### LIVE TRAC RTV-5 FEATURES:

- Hardwired GPS Vehicle Tracker
- Can Be Wired To A Panic Button For Email/Text Message Alerts\*
- Capable Of Door Unlock/Starter Disable/PTO Monitor\*

### RECOMMENDED FOR:

- Small & Large Fleets
- Personal Use - Teen & Elderly Drivers, Family Members
- Covert Installations
- Executive Vehicle Tracking

\*Additional features like door unlock/starter disable require the use of relays which are sold separately at [www.LiveViewGPS.com](http://www.LiveViewGPS.com).



## LIVE TRAC G-5 VEHICLE TRACKER

*Best Seller!*



SKU: G5 **SALE PRICE: \$239.00**

Unlimited 10 Second Tracking \$29.95 Per Month

Dimensions:	2.5" x 3.125" x .875"
Antenna:	Internal
GPS Chipset:	50 Channel Receiver -160 dBm tracking
Power Source:	6 to 30 VDC
Operating Temp:	-22 to 167 Degrees F
Installation:	Basic 3 Wire

*Ordering is Easy By Phone Or  
Online! 1-888-544-0494 or  
[www.LiveViewGPS.com](http://www.LiveViewGPS.com)*

The G-5 and the G-5 Pro trackers boast a compact form, state-of-the-art GPS chipset and integrated internal antenna. Released on the Live Trac system 2012, the G-5 series is one of the most reliable and proven vehicle tracking solutions.

### LIVE TRAC G-5 FEATURES:

- Small Form Ideal For Covert Installation
- Hardwired Vehicle Tracker
- 2 Day Internal Battery Back-Up

### RECOMMENDED FOR:

- Small & Large Fleets
- Powered Assets
- Personal Use - Teen Drivers, Family Members

**Track It From:** iPhone®, iPad®, Android®, Blackberry®, Windows Mobile™, Or Any Other Compatible HTML5 Mobile Device.\*\*

## LIVE TRAC G-5 PRO VEHICLE TRACKER

*New For 2012*



SKU: G5 Pro **SALE PRICE: \$239.00**

Unlimited 10 Second Tracking \$29.95 Per Month

Dimensions:	4.3" x 3.2" x 1.6"
Antenna:	Internal
GPS Chipset:	50 Channel Receiver -160 dBm Tracking
Power Source:	6 to 30 VDC
Operating Temp:	-22 to 158 Degrees F
Installation:	Basic 3 Wire

The G-5 Pro offers a larger form and larger battery back-up than its cousin, the G-5, and is panic button capable. It can also be used to disable a vehicle's starter and unlock/lock a vehicle's door.

### LIVE TRAC G-5 PRO FEATURES:

- 10 Day Battery Back-Up
- Panic Button Enabled
- Starter Disable, Door Unlock, PTO\*
- Weatherproof MIL SPEC 202G, 801F & SAEJ1455

### RECOMMENDED FOR:

- Small & Large Fleets
- Powered Assets
- Executive Vehicle Tracking
- Personal Use - Teen Drivers, Family Members

\*Additional features like door unlock/starter disable require the use of relays which are sold separately at [www.LiveViewGPS.com](http://www.LiveViewGPS.com).

## LIVE TRAC RTV-20 VEHICLE TRACKER



SKU: RTV20    **SALE PRICE: \$249.00**  
 Garmin® Cable: **\$49.95**

The perfect solution for dispatching calls to your fleet while monitoring the precise location of your vehicles in real-time. The RTV-20 allows you to take control of your fleet and your business with the integration of any Garmin® and dezl® series devices.

Send and receive unlimited messages to your drivers from any web enabled computer. Dispatch service calls directly to your drivers and receive on location arrival notifications.

### LIVE TRAC RTV-20 FEATURES:

- › Hardwired GPS Tracker
- › Internal Antenna
- › Can Be Wired To A Panic Button For Email/Text Message Alerts\*
- › Capable Of Door Unlock/Starter Disable/PTO Monitor\*

### RECOMMENDED FOR:

- › Large and Small Businesses With Company Vehicles Where Monitoring & Communication is Critical

Dimensions:	4" x 2" x .85"
Antenna:	Internal
GPS Chipset:	50 Channel Receiver -168 dBm tracking
Power Source:	9 to 30 VDC
Operating Temp:	-22 to 149 Degrees F
Installation:	Basic 3 Wire

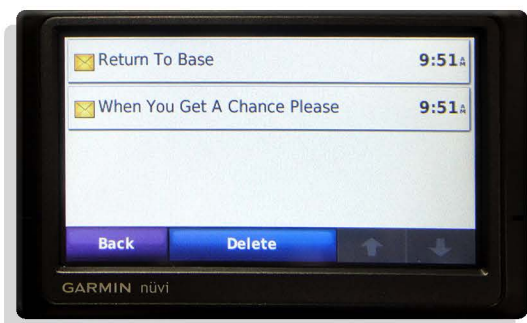
Integrates With Garmin® nuvi® And dezl® Navigation Devices\*



### Dispatch Service Calls From Your Desktop



### Send And Receive Messages



### Flat Rate, Unlimited Use Subscription Plans Include:

10s Tracking Without Messaging: \$29.95 Per Month  
 10s Tracking W/Messaging: \$39.95 Per Month  
 5s Tracking Available: Call For Current Rates

\*Additional features like door unlock/starter disable require the use of relays which are sold separately at [www.LiveViewGPS.com](http://www.LiveViewGPS.com).

\*Garmin® device not included. Garmin® is a registered trademark of Garmin® LTD. nuvi® is a registered trademark of Garmin® LTD. dezl® is a registered trademark of Garmin® LTD.

## LIVE TRAC PT-10 SERIES

*“The most accurate, easy to use GPS tracker available.”*  
-GPS Magazine



Antenna:	Internal
GPS Chipset:	14 Channel Receiver -160 dBm tracking
Power Source:	3.7 VDC
Operating Temp:	-4 to 140 Degrees F
Installation:	None Required
Housing:	Polycarbonate

The PT-10 series features easy to use, portable, real-time GPS trackers equipped with motion sensors to conserve battery life. 10 second updates and advanced positioning technology are standard, ensuring the PT-10 series will meet and exceed your speed and accuracy needs.

### ULTRA-FAST UPDATES

Every 20 Feet or 10 Seconds Over 10 MPH

### SMALL, LIGHTWEIGHT FORM

For Covert Tracking

### FLAT RATE

Unlimited Use - \$39.95 Per Month

### PORTABLE

Deploys In Seconds - Slap & Track

### MOTION ACTIVATED

Conserves Battery While Providing Automatic Live Tracking

**Track It From:** iPhone®, iPad®, Android®, Blackberry®, Windows Mobile™, Or Any Other Compatible HTML5 Mobile Device.\*\*

### HOW LONG WILL THE PT-10 BATTERY LAST?

The PT-10 only uses its battery while in motion. We rate the PT-10 battery life in Motion Hours. We define motion hours as the actual time the PT-10 is on the move.

**STANDARD BATTERY:** 8 Motion Hours

**PRO BATTERY:** 70 Motion Hours

**PRO-PLUS BATTERY:** 100 Motion Hours

**PT-100 BATTERY:** 130 Motion Hours

For example, the PT-10 Pro battery is a 10 Amp hour lithium polymer battery rated at 70 motion hours. It would last over 70 days on a vehicle that drove 1 hour each day. If the same vehicle had a daily total drive time of 2 hours, the same battery would last approximately 35 days before needing to be re-charged.

### RECOMMENDED FOR:

- Business Use - Employee Tracking
- Covert Tracking - Surveillance
- Personal Use - Child & Nanny Tracking (In a Backpack or Stroller)
- Any Application Where Small Device Size & Fast Update Speeds Are Critical



*Not Sure What You Need? Call  
Our Experts! 1-888-544-0494*



## LIVE TRAC STANDARD PT-10



SKU: PT-10    **SALE PRICE: \$229.00**

- › 1.3 Amp Hour Internal Battery
- › 8 Day Battery Life\*
- › Magnetic Mount Case Available
- › Dimensions: 3.5" x 2.08" x 0.75"

## LIVE TRAC PT-10 PRO



SKU: PT-10 Pro    **SALE PRICE: \$378.00**

- › 10 Amp Hour External Battery
- › 2 Month Battery Life\*
- › Customized Magnetic Mount Pelican® Case Included
- › Dimensions: 5.0" x 4.0" x 2.75"  
(Inside Magnetic Mount Case)

## LIVE TRAC PT-10 PRO PLUS



SKU: PT-10 Pro Plus    **SALE PRICE: \$549.00**

- › 15 Amp Hour External Battery
- › 3 Month Battery Life\*
- › Customized Magnetic Mount Pelican® Case Included
- › Dimensions: 5.0" x 4.0" x 2.75"  
(Inside Magnetic Mount Case)

## LIVE TRAC PT-100



SKU: PT-100    **SALE PRICE: \$629.00**

- › 17 Amp Hour External Battery
- › 4 Month Battery Life\*
- › Customized Magnetic Mount Pelican® Case Included
- › Dimensions: 7.5" x 4.0" x 2.75"  
(Inside Magnetic Mount Case)

\*Battery life based on 1 hour per day of actual drive time.



## INTRODUCING THE **VLS** PLATFORM

*Affordable Internet Based GPS Tracking  
From Any Web Enabled Computer*

For users seeking powerful monitoring at a lower price, the VLS platform delivers a fully featured real-time on demand GPS tracking system in a budget-friendly package. Monthly monitoring starts at \$19.95, and, like all LiveViewGPS products, no contract is necessary.

### **VLS IS USED BY:**

- Large & Small Businesses With Company Vehicles & Mobile Employees
- Individual Consumers For Personal Use

### **VLS PLATFORM FEATURES:**

- Real-Time On Demand GPS Tracking From Your Computer - No Software Required
- Flat-Rate Unlimited System & Tracking Use
- Automatic Text/E-mail Alerts For Speeding, Zones, Routes, Ignition & More
- Automated Detailed Reporting - Starts/Stops, Excessive Idling, Mileage Speeding



### **COMPETITIVE EDGE**

Economically Priced

### **EASY TO USE**

User Friendly & Intuitive Interface

### **100% WEB BASED**

Using Google Maps Overlay

### **NO CONTRACTS**

Month To Month Billing

## REAL-TIME **VLS-300** VEHICLE TRACKER



**SKU: VLS300N    SALE PRICE: \$269.00**

Tracking Service From \$19.95 Per Month

Dimensions:	4.55" x 2.31" x 0.87"
Antenna:	Internal
GPS Chipset:	12 Channel Receiver -160 dBm tracking
Power Source:	6 to 18 VDC
Operating Temp:	-4 to 140 Degrees F
Installation:	Basic 2 or 3 Wire

### **VLS-300 STANDARD FEATURES:**

- Hardwired GPS Vehicle Tracker
- Update Frequency: 1, 2 or 5 Minute(s)
- Map View Pinpointing All Starts/Stops, Speeding, Idle, Events
- Store & Forward Data When GSM Coverage N/A
- Flat-Rate Unlimited Use System

### **VLS-300 OPTIONAL FEATURES:**

- Speed Gauge - Reports Actual Speed Violations
- IFTA Mileage & Reporting Module

### **RECOMMENDED FOR:**

- Small & Large Fleets
- Personal Use - Teen & Elderly Drivers
- Covert Installations
- Areas With Poor GSM Coverage

*Call Us For A Free System Demo  
Today 1-888-544-0494*

## MOBILELOCK DS-500 GPS ALARM & LOCATOR



SKU: MOBILELOCK DS500 **SALE PRICE: \$249.00**  
Monthly Monitoring \$19.95 Per Month

Dimensions:	4.4" x 3.5" x 1.3"
Antenna:	Internal
GPS Module:	Qualcomm® gpsOne™
Power Source:	30 Day Battery Life
Operating Temp:	-4 to 140 Degrees F
Installation:	None Required

*Protect Your Property From Theft!*

Mobilelock GPS locator with anti-theft alarm is an innovative, wireless system designed to monitor valuable mobile assets wherever they are located. The Mobilelock unit provides a flexible, portable solution for jobsite security and 24/7 asset management.

### MOBILELOCK DS-500 FEATURES:

- 30 Day Battery Life
- Vibration, Tamper, Door Contact, Temperature Sensors
- Phone, Email &/Or Text Notifications When Alarm Is Activated
- Silent & Audible Alarm Modes

### RECOMMENDED FOR:

- Asset & Property Protection

## WORLDWIDE SX-1 SATELLITE TRACKER



SKU: SX1 **SALE PRICE: \$449.00**

Dimensions:	7.25" x 3.25" x 1"
Antenna:	Internal
GPS:	100% Satellite Based
Power Source:	3.2 Ah Battery
Operating Temp:	-40 to +185 Degrees F
Installation:	None Required

The product of choice for applications requiring low-maintenance, long-life solutions, this satellite tracker delivers up to seven years (1 locate per day) of uninterrupted service on a single, easily field-replaceable lithium battery. The SX-1 can be installed, activated and operational in less than one minute. This incredibly powerful tracker is able to track and monitor any asset nearly anywhere on the planet.

### WORLDWIDE SX-1 FEATURES:

- All Satellite Device
- Near Worldwide Coverage
- Rugged & Waterproof
- 7 Year Battery Life With 1 Locate Per Day

### RECOMMENDED FOR:

- Asset Tracking & Visibility

*Call Us For A Free System Demo  
Today 1-888-544-0494*

## GPS DATA LOGGER



SKU: GPS DATA LOGGER SALE PRICE: \$189.00

Dimensions:	1.5" x 1.5" x .05"
Antenna:	Internal
GPS Chipset:	50 Channel Receiver -160 dBm tracking
Power Source:	Internal Battery
Operating Temp:	-4 to 140 Degrees F
Installation:	None Required

*Ordering is Easy By Phone Or  
Online! 1-888-544-0494 or  
[www.LiveViewGPS.com](http://www.LiveViewGPS.com)*

A passive GPS data logger that will record location data for download via a Windows Based PC and viewing on Google Maps.

This GPS data logger comes with no monthly service fees, making it an economical way to find out where someone or something has been. Includes a magnetic mount case for vehicle tracking.

### GPS DATA LOGGER FEATURES:

- No Monthly Fees
- Fast Position Tracking
- Motion Activated Logging
- Download & Export Data
- 30 Days On A Single Charge  
(1 Hr Per Day Of Motion)

### RECOMMENDED FOR:

- Businesses and Individuals Needing To Collect Historical Data

## CELL PHONE TRACKING

### Mobile Phone Tracker

Pre-Paid Mobile Phone Locate Card

Instantly locate any  
**Mobile Phone**  
on Demand



No APPLICATION or SOFTWARE to INSTALL

Works with these phone carriers:

at&t T-Mobile Sprint **verizon**

**\$19.95**  
30 Locates

[www.MobilePhoneLocate.com](http://www.MobilePhoneLocate.com) ©2012 LiveViewGPS, Inc. - Patent Pending

SKU: MPL SALE PRICE: \$19.95

Works With All Devices On  
ATT, Sprint, T-Mobile, Verizon

For More Information:  
[www.MobilePhoneLocate.com](http://www.MobilePhoneLocate.com)

Locate any Mobile Phone on Demand. Works with all mobile phones on the ATT, TMobile, Sprint, Verizon cell phone networks..

### MOBILE PHONE LOCATE FEATURES:

- No Software To Download
- No App To Install
- Instant Access
- Works with Over 350 Million Wireless Devices
- ATT, Sprint, T-Mobile, Verizon Compatible

### RECOMMENDED FOR:

- Family Safety
- Workforce Management





Company Headquarters

29021 Ave Sherman STE 103 Valencia, CA 91355

Order by phone Monday - Friday, 7AM - 5PM PST

Toll Free: **1-888-544-0494** Direct: **661-294-6805**

Order online at [www.LiveViewGPS.com](http://www.LiveViewGPS.com)