

2008

Qstarz Travel Recorder PC Utility
V4
User's Manual

Qstarz International Co., Ltd.

2008/1/18

Contents

Important Notice	3
System Requirement.....	3
Read GPS Log From Device	3
Clear BT-Q1000P's Memory.....	5
BT-Q1000P Configuration	5
Add Place Mark	7
Add Photos.....	8
Browse photos	9
GeoTag – Save GPS Information into Photos.....	10
Photo List Window	10
Upload Photos to Flickr	11
Shift Photo Time.....	12
Photo Comments	12
Google Earth Viewing.....	13
Save As KMZ File	13
Altitude Graph.....	13
Speed graph	14
Track Editing.....	14
Save and Open Project.....	15
Time Zone Setting	16
Options.....	17

Important Notice

Qstarz Travel Recorder PC Utility V4 can't be opened with Qstarz Travel Recorder PC Utility V3 simultaneously. Please execute either one of both or the program may experience unstable status.

System Requirement

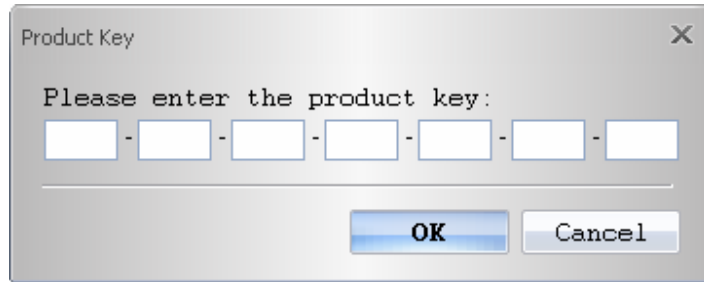
Minimum System Requirement	Recommended System Requirement
<ul style="list-style-type: none">- Windows XP or Vista- Pentium 3, 500Mhz- 128M RAM- 128MB disk space- Network speed: 128Kbits/sec- 3D-capable video card with 16Mbytes of VRAM- 800x600, "16-bit High Color" screen	<ul style="list-style-type: none">- Windows XP- Pentium 4 2.4GHz+ or AMD 2400xp+- 512M RAM- 2 GB of free disk space- Network speed: 768 Kbits/sec or better (DSL/Cable)- 3D-capable video card with 32 MB of VRAM or greater- 1280x1024, "32-bit True Color" screen

Read GPS Log From Device

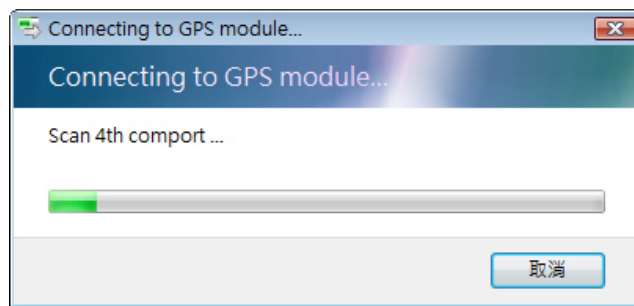
Step 1 – Switch BT-Q1000P to Log mode and connect BT-Q1000P to PC USB port.

Notice: Please make sure turn BT-Q1000P to Log mode or it will enter sleep mode automatically in few minutes under NAV mode.

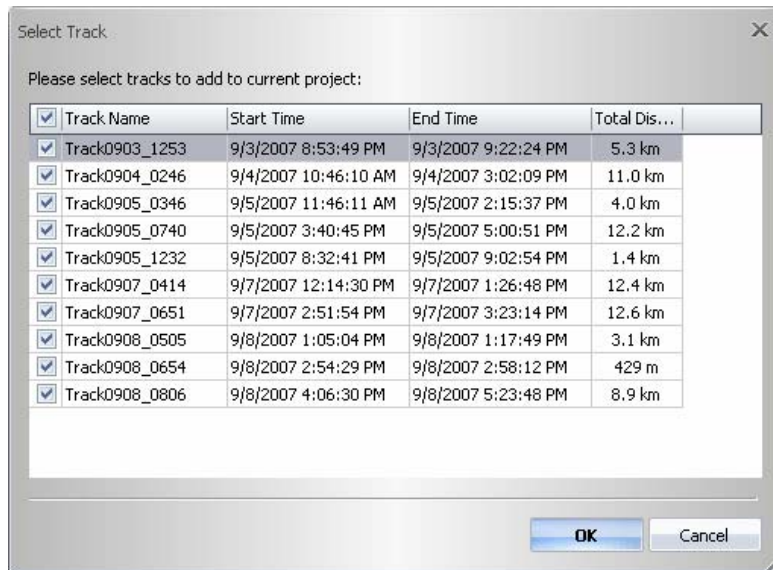
Step 2 – Menu command “File” -> “Read log...” Users have to input product key at the first time. The product key is on the cover of installation CD.



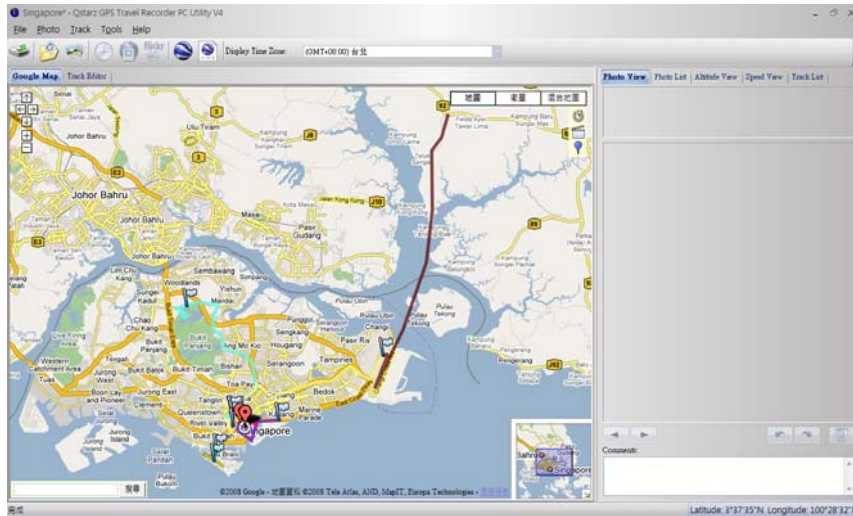
Travel Recorder PC Utility will automatically detect the com port and baud rate and load in the GPS tracks.



A track list window will be popped up. Select the tracks to import.

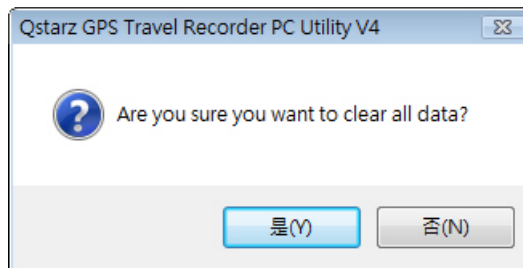


Tracks will be shown on the Google Map window.



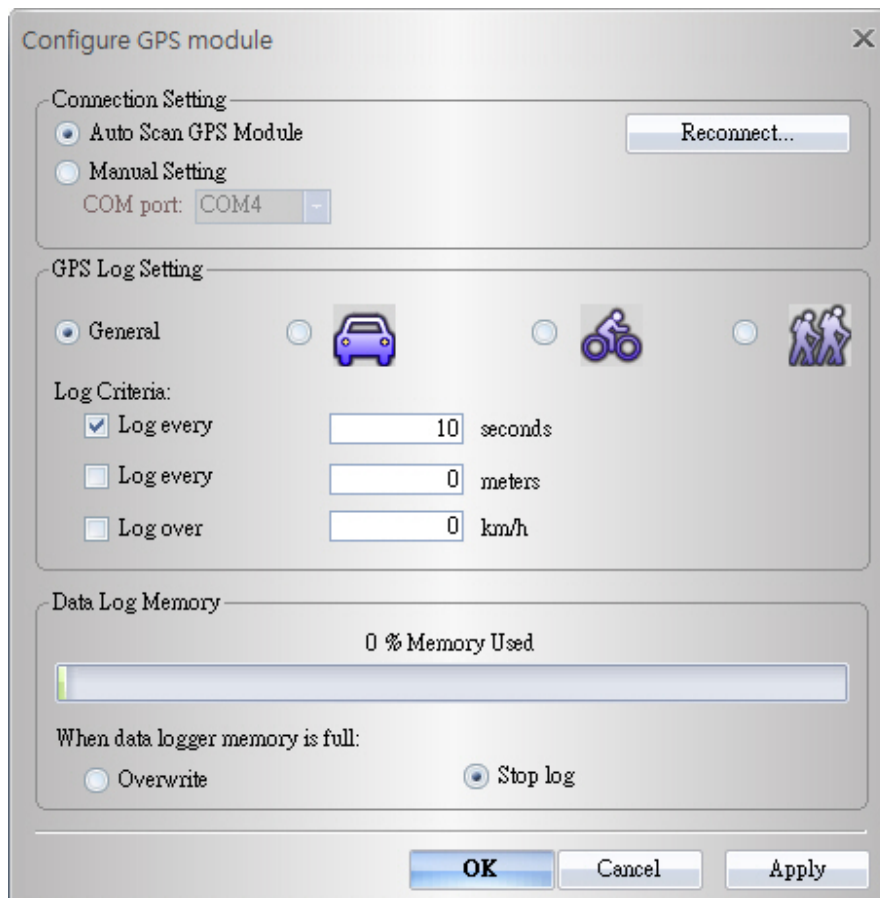
Clear BT-Q1000P's Memory

Menu command "File" -> "Clear log" will clear the data stored in device, so the device memory are enough for next usage.



BT-Q1000P Configuration

Turn on BT-Q1000P and connect it to PC. Menu command "File" -> "Config GPS..."
If BT-Q1000P is not connected, the GPS Log Setting area will be disabled. Please make sure the BT-Q1000P's power switch is turned on when connecting.



Connection Setting:

Auto Scan GPS Module (Recommended)

The program will automatically detect the com port and the baud rate. It is recommended to set to auto scan.

Manual Setting

Users can also manually set the port and baud rate. Although it can speed up the initial connect time, but it is not recommended unless users understand the valid port and baud rate.

GPS Log Setting

There are 4 log modes: General mode, vehicle mode, cycling mode, and hiking mode. Users can also change the default setting of these 4 modes.

Log every () seconds:

If the criterion is checked, BT-Q1000P will not log if difference between current time and last logged time is less than the specified time.

Log every () meters:

If the criterion is checked, BT-Q1000P will not log if the distance of current position and last logged position is less than the specified distances.

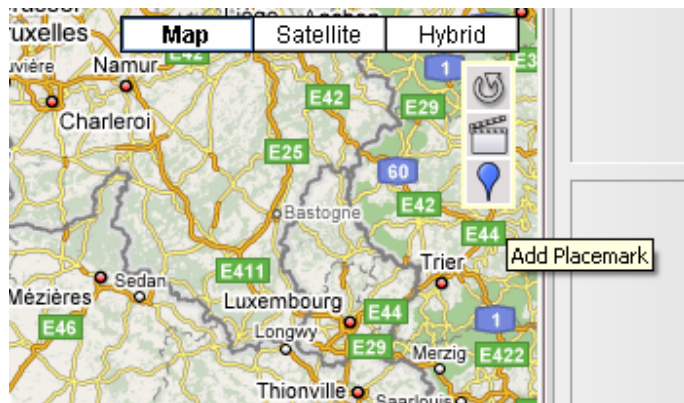
Log over () km/h:

If the criterion is checked, BT-Q1000P will not log if the speed is under the setting.

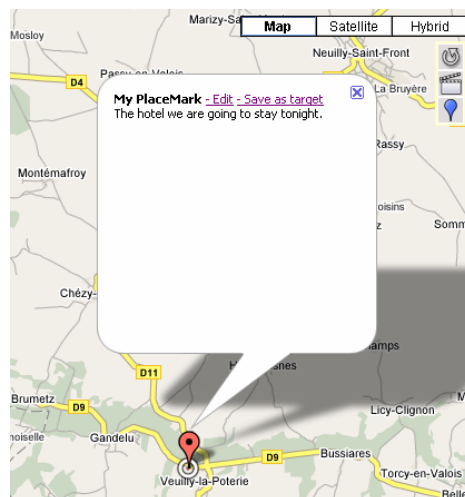
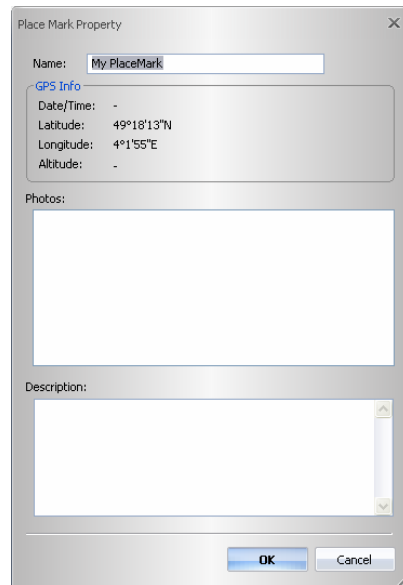
Data Log Memory

A bar show how many percentage of memory is used in the BT-Q1000P device. Users can use “Clear Log” to clear all the memory.

Add Place Mark



To add a new place mark, please click on the blue balloon icon, and then click on the position of new place marker. The “Place Mark Property” dialog will pop up for editing.



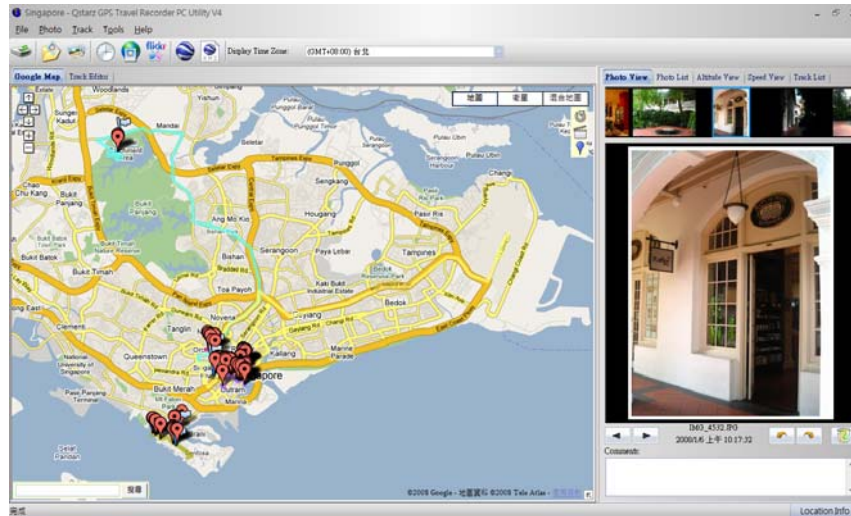
Add Photos

Users can add photo from a file folder, or selected files.

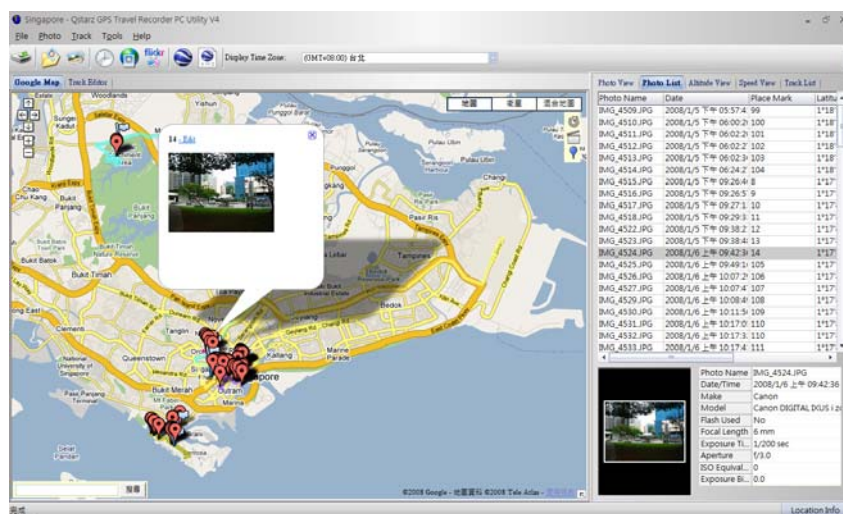
Add photo from a folder: Menu command "Photo" -> "Add Photo..." -> "From Folder". Select a folder to add photo.

Add photo from selected files: Menu command "Photo" -> "Add Photo..." -> "From Files". Use Ctrl-Click, or Shift-Click to select multiple files.

The photo will be shown on the Photo View window. Users can add comments to each photo. Users can also rotate, delete photo.



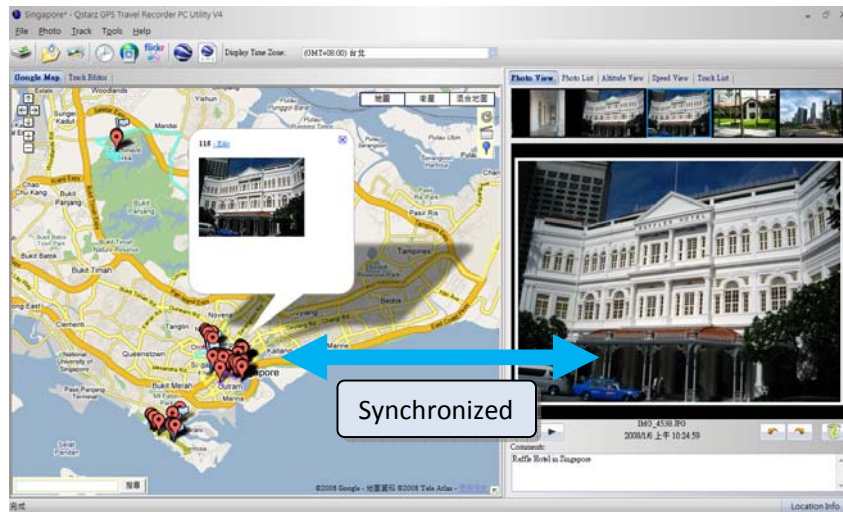
When photos are added, Travel Recorder PC Utility V4 will automatically match photo and GPS logged waypoints by time. Place marks will be created as a placeholder for photos.



Browse photos

Click on the “next photo” and “prev photo” buttons to browse the photos.

Current photo and current time place mark will be synchronized.



GeoTag – Save GPS Information into Photos

Menu command “Photo” -> “Write GPS info into photos” will save the latitude, longitude, and altitude into photo.

A progress window will show the writing progress.

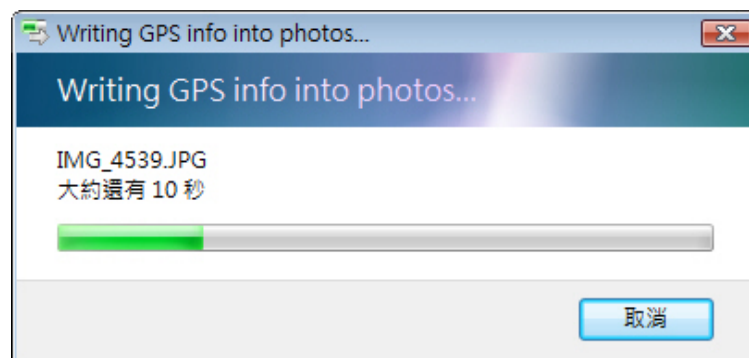
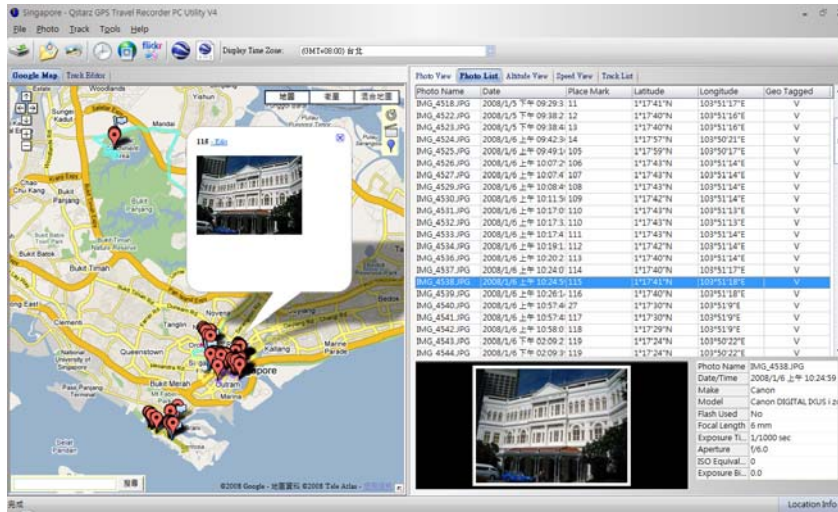


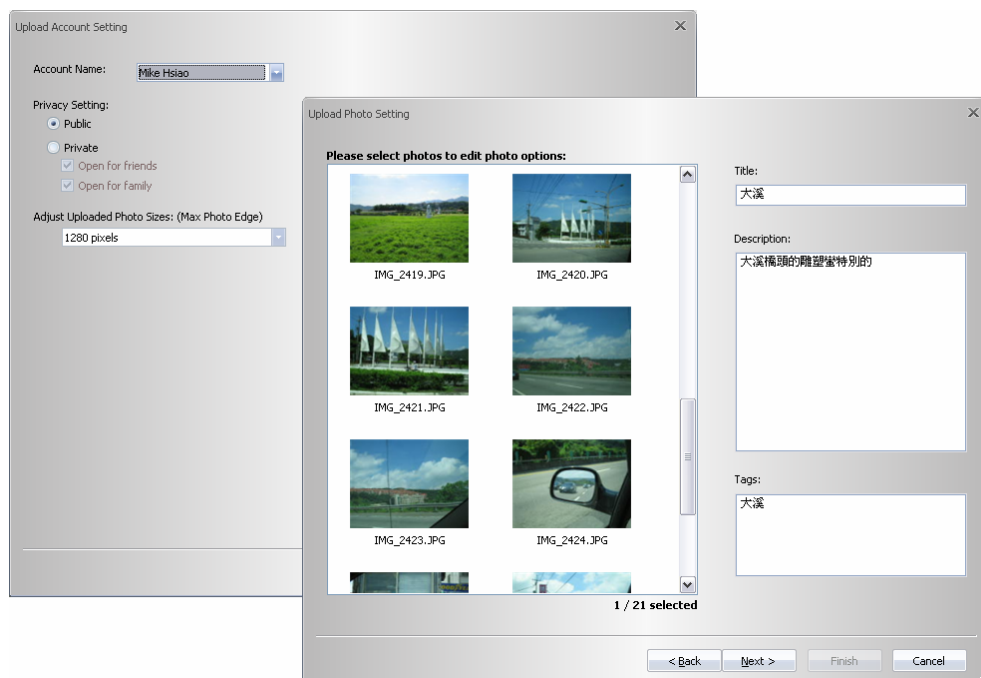
Photo List Window

Photo list window will show the attributes of photos. The information includes “file name”, “date”, “place mark”, “latitude”, “longitude”, and “Geotagged flag”.



Upload Photos to Flickr

Menu command "Photo" > "Upload Photos to Flickr..." will invoke upload wizard. Users can set "Title", "description", "Tag", "Public or Private", and "Upload photo size".



If you want to upload geotagged photos directly on Flickr web site:

You have to turn on the following option. "Your Account">"Privacy & Permissions">"Import EXIF location data: Yes"

After the option is turned on, the uploaded photo will be put on map.

Go to Flickr > “You” > “Your map”, you can browse your photos on the map.

Shift Photo Time

Menu command “Photo” -> “Shift photo time...” will invoke the shift photo time window. All photos will be added (or subtracted) the specified time. The dates are saved in the Exif parts of Jpeg or Tiff file. After the shift, Travel Recorder PC Utility V4 will automatically match the photo and track waypoints again. User can put more than 365 in days.

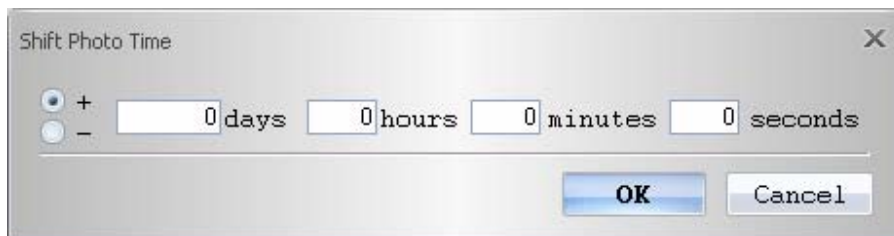
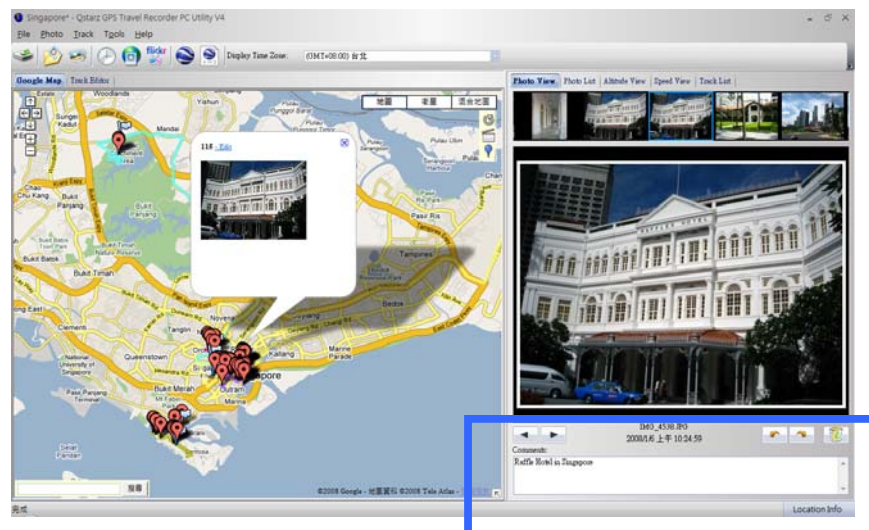


Photo Comments

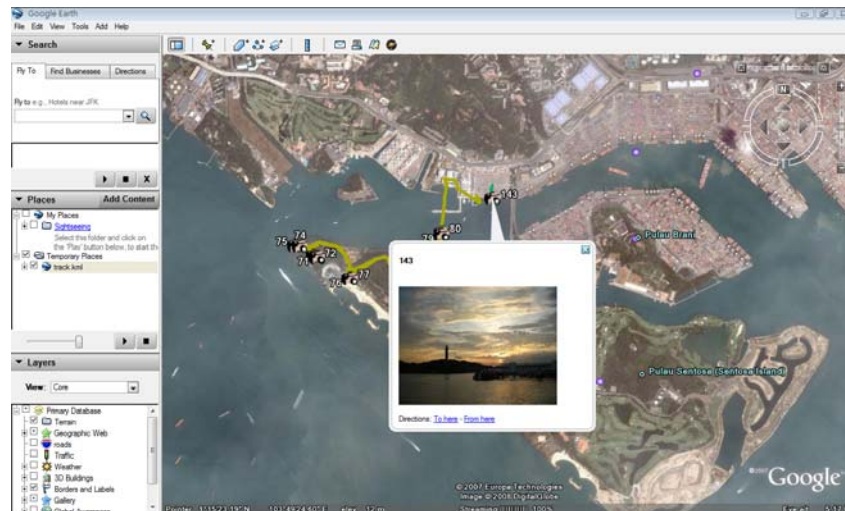
Support multi-language comments. The comments will be uploaded to Flickr, packed in the kml file.



Google Earth Viewing

Command “File” -> “View in Google Earth” will invoke Google Earth to view the tracks and photos. Users have to install the Google earth.

<http://earth.google.com/>



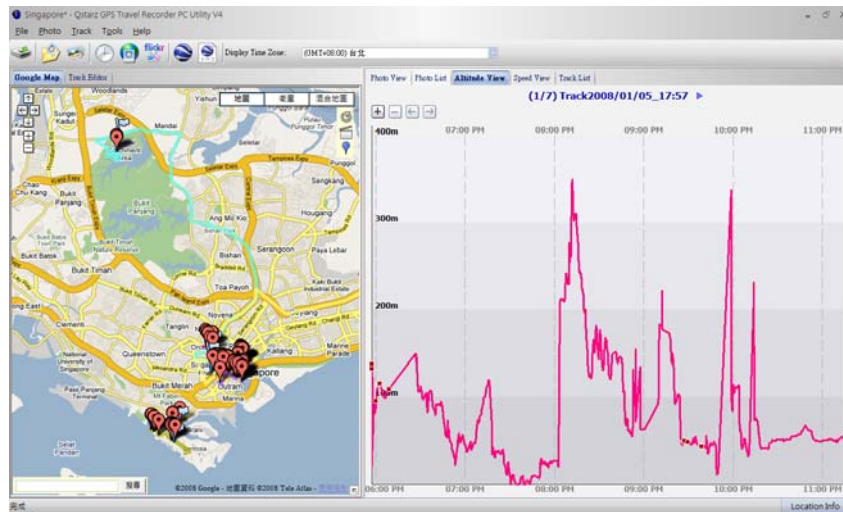
Save As KMZ File

Menu command “File” -> “Export as Kml...” to save the tracks and photos in kmz file. You can import kmz file to Google Earth. You can also send kmz file to friends to share their trips with friends as long as they have installed Google Earth on their computers.

The picture size packed in the kmz file can be set in the options dialog. Menu command “Tools” -> “Options” > “Google Earth” > “Photo size in KMZ”.

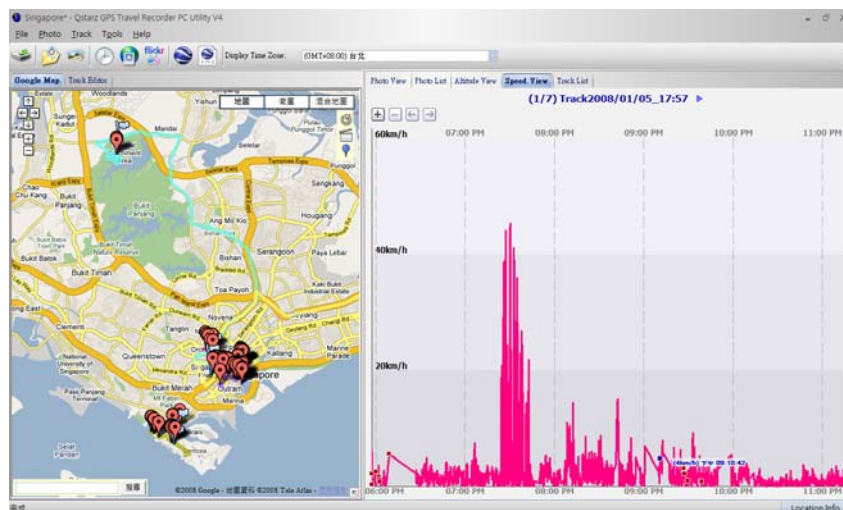
Altitude Graph

Switch to “Altitude View” window will show the altitude graph. The waypoints with photos on it will be marked with red square. Moving cursor on red square will display the photo. You can pan left, pan right, zoom in, zoom out in the altitude graph.



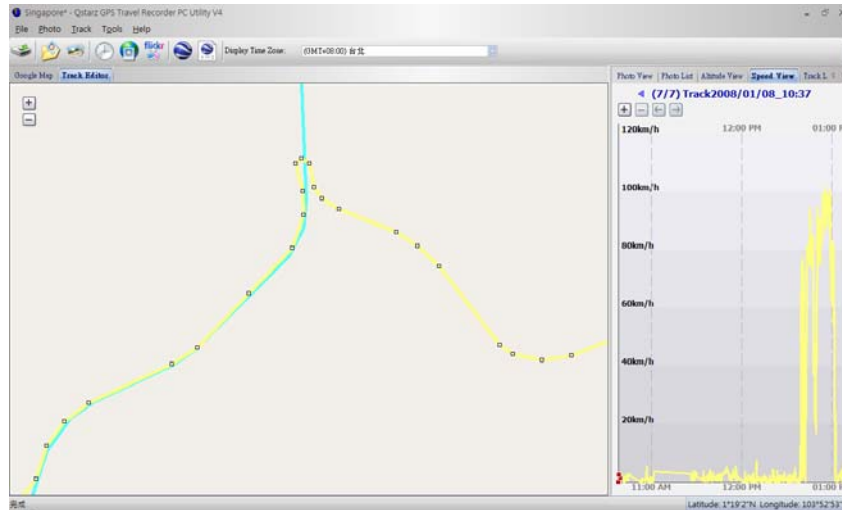
Speed graph

Switch to “Speed View” window will show the speed graph. The waypoints with photos on it will be marked with red square. Moving cursor on red square will display the photo. You can pan left, pan right, zoom in, zoom out in the altitude graph.

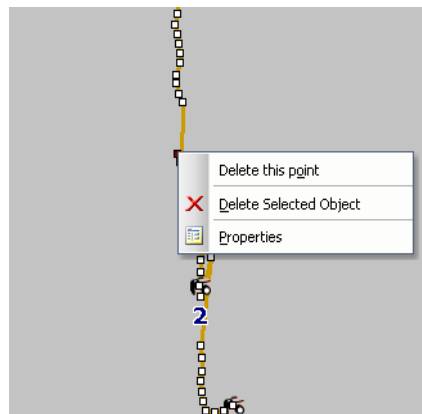


Track Editing

Switch to folder “Track Editor” on the left window. Move the cursor on the track will show the preselected waypoint time. Click on track to select the whole track.



Mouse right button menu command “Delete this point” will delete the selected waypoint. Mouse right button menu command “Delete Selected Object” will delete the selected track.



Save and Open Project

Menu command “File” -> “Save project” will save the tracks and photo as a project file.

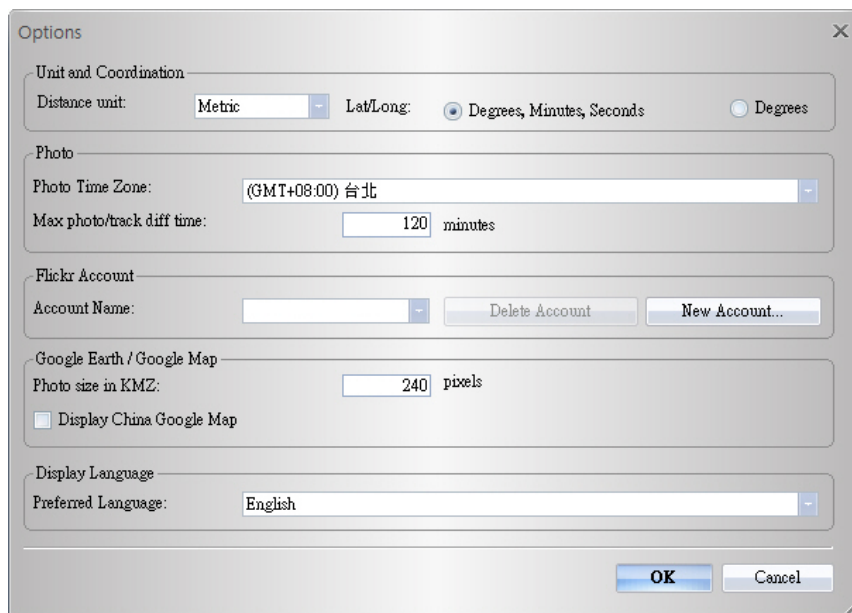
Menu command “File” -> “Open project...” will open the saved project. The project, photos, and photo comments will be restored after the project opened.

Time Zone Setting

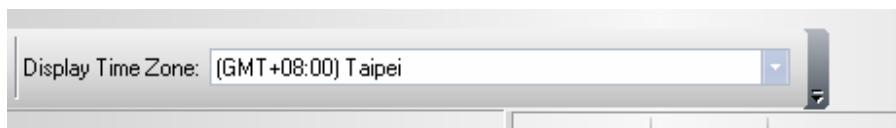
There are two time zone settings in “Travel Recorder PC Utility”. One is “Photo time zone”, the other is “Display time zone”. “Photo time zone” is set to the same time zone of your digital camera. The “Display time zone” is set for displaying purpose. For example, if you live in England and you travel to United State, the “Photo time zone” should be set to “England” because your digital camera time zone is in England, and the display time zone should be set to “United State”.

The “Photo time zone” by default is set to the PC default value. In most of the case the default value is correct.

Menu command “Tools” -> “Options” will invoke the options dialog. You can set “Photo Time Zone” in the dialog.

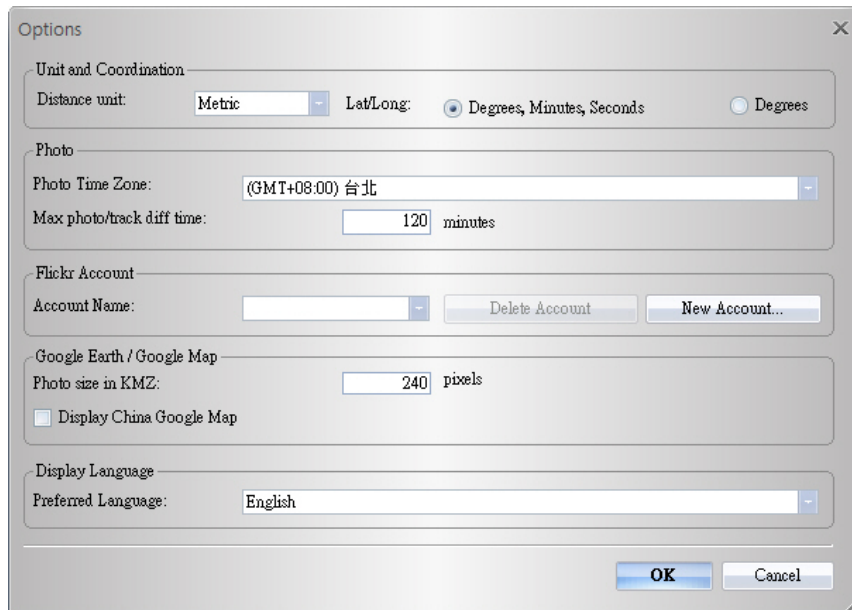


The “display time zone” setting is in the status bar.



Options

Menu command “Tools” > “Options...”



Distance unit:

Metric: Kilometer / meters will be used for displaying.

Imperial: Miles / feet will be used for displaying.

Lat/Long:

Degrees, minutes, seconds: Latitude and longitude will be display like 23°12'20"

Degrees: Latitude and longitude will be display like 23.22152°

Photo Time Zone:

The time zone of your digital camera time setting

Max photo/track diff time:

The setting is used to match photo and track waypoints. PC Utility V4 will match photos and waypoints by time. It will find the nearest waypoint time to locate the photo. Yet, if the closest waypoint time is more than the “Max photo/track diff time”, it will not match the photo.

Photo size in KMZ:

The size of the photos packed in the KMZ file. It is related to the command “File” > “Export As KMZ...”

Preferred Language:

Set the languages for menu, buttons and messages.