



LIVEVIEWGPS®

TRACKING YOU CAN TRUST

2011 PRODUCT CATALOG

GPS TRACKING

- ⊙ — *Business*
- ⊙ — *Security & Surveillance*
- ⊙ — *Personal Use*



www.LiveViewGPS.com

Valencia, California

Toll Free: 888.544.0494

GPS tracking has evolved, making for more user friendly systems and lower entry costs. Today we are able to do things with GPS tracking systems that a few years ago, most people would have thought were only possible in a sci-fi movie. With the advent of the internet, mobile communication networks, satellite mapping systems, and GPS we are able to do some pretty amazing things. Whether it is for business use, surveillance and security, or even personal use our GPS tracking systems are designed to perform as we promise them to. It is no wonder why many of the top law enforcement agencies in the U.S. trust and use our GPS tracking products with confidence.

 **Table Of Contents**

Live Trac System.....	Page 2
Real-Time VLS Tracking.....	Page 13
Mobile GPS Alarm.....	Page 16
SX-1 Satellite Tracker.....	Page 17
GPS Data Logger.....	Page 18
Blackberry Tracking Software.....	Page 18
Covert GPS Tracking	Page 19



📍 Live Trac GPS Tracking System

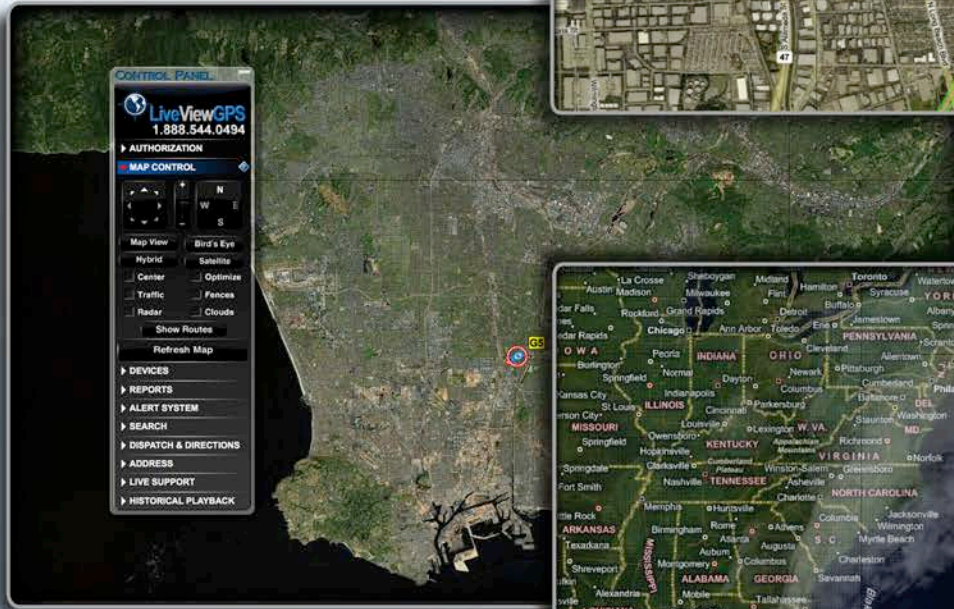
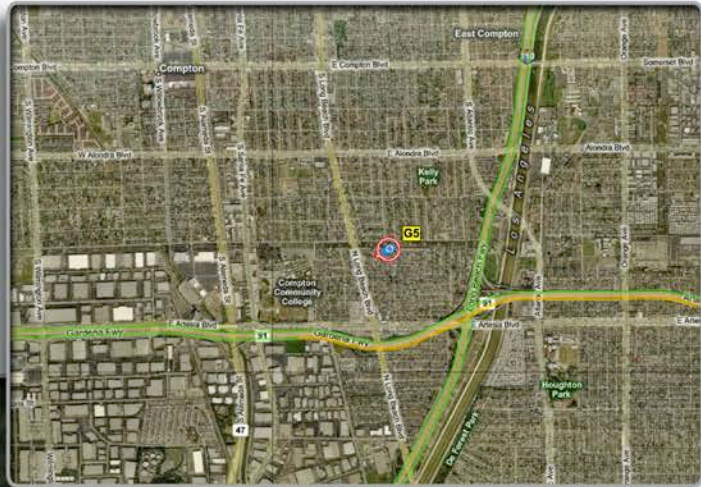
“ I Was Skeptical...But Gentlemen, I generally do not write reviews of products. However, this is a product that I feel compelled to review. With some skepticism, I purchased your RTV-5 vehicle tracking system. I was truly surprised to see it update every 10 seconds on my computer. I cannot believe the amount of information your system provides, it is amazing. Thanks for an exceptional product and exceptional service. ”



Live Trac Features

- Ultra Fast Position Updates
- 90 Day Historical Playback – See Where Your Vehicle Has Been Turn By Turn
- Notifications And Alerts
- Vehicle/Device Maintenance Alerts (Based On Miles/Hours)
- No Software Necessary – View From Any Web Enabled Computer
- iPhone/Droid Viewing Utility Available
- No Contracts

Live View GPS View With Traffic



Live View GPS Satellite Tracking View



Live View GPS View With Weather

Alert System: Send a text to a designated cellphone(s) or an email when:



- Your Vehicle/Device Enters Or Exits A Specified Zone
- Exceeds A Speed Threshold You Set
- Sends A Panic Alert (RTV-5 And RTV-20 Only)
- Alerts When Ignition Is Turned On Or Off
- When Your Vehicle Or Device Deviates From A Route

Use Your Mobile Phone To Track Your Devices- iPhone and Droid Apps Available

More Live Trac Features

- Detailed Reporting
- Start/Stop Report
- Excessive Idling
- PTO Sensor Reporting
- Vapor Trail
- Aggressive Driving
- Vehicle Mileage
- Speeding Reports
- Zone Activity Report



For Business

“ On the first day, of installing your system on my company’s vehicles, I discovered employees who were doing things they were not supposed to be doing. I suspected these things were going on, but never had proof, well I do now, thanks to your system. ”

-LiveViewGPS Customer RJ, May 2008

- Verify Employees Are Performing Their Duties
- Curtail Waste
- Increase Employee Productivity
- Reduce Fuel Usage
- Improve Customer Service
- Verify Billing On Routes
- Cut Down Or Even Eliminate Excessive Overtime Costs

For Personal Use

“ You can't place a monetary value on peace of mind...tell you what guys, this is the best money I've ever spent. We have only one child, and sadly he's got the same wild genes I had growing up. At least this helps us temper his behavior with absolute proof. Thanks for a dependable, useful tool! ”

-Frank S., MSc, MD

- Monitor And Track The Exact Location Of Your Teenage Drivers
- Keep Track Of Your Elderly Family Members
- Protect Your Personal Property
- Verify If A Family Member Is Telling You The Truth



Live Trac G-5 Hardwired Vehicle Tracker

[Hardwired Units]

The G-5 is a next generation live vehicle tracking system, providing you with 10 second vehicle tracking. The G-5 combines into one small package - a highly sensitive GPS receiver that works where other GPS vehicle tracking systems fail.

- For Vehicles/Trailers/Trucks/ Construction Equipment/ Boats
- Blazing Fast Position Updates - 10 Second Tracking
- Integrated Internal Antenna
- Rugged Design And Weatherproof
- Internal Battery Backup
- Fast & Easy Installation



LIVE TRAC G-5

- Rugged Weatherproof Design
- Vehicle Tracking System
- Internal Battery Backup



PHYSICAL SPECIFICATIONS

Dimensions	2.5 x 3.125 x 0.875 inches
	63.5 x 80 x 23 mm
Weight	3 ounces (internal)
	85 grams (internal)

GPS antenna conn.	Internal
Cellular antenna conn.	Internal
Status LEDs	GPS and Cellular

ELECTRICAL SPECIFICATIONS

Operating Voltage	6 to 32V DC
Power Consumption	
Deep Sleep	<1 mA @ 12V
Sleep on Network	<10mA @ 12V
Active Standby	<70mA @ 12V

ENVIRONMENTAL SPECIFICATIONS

Operating	-22° to 167°F (–30°C to 75°C)
Storage	-40° to 185°F (–40°C to 85°C)
Humidity	95%RH @ 122°F non--condensing
Shock and Vibration	SAE J1455
EMC/EMI	SAE J1113
RoHS Compliant	

GPS TECHNOLOGY

GPS	50 channel (with WAAS)
Sensitivity	--160dBm tracking
Horizontal Accuracy	3 meter CEP (with SA off)

GSM SPECIFICATIONS

Comm. Modes	GPRS packet data and SMS
Data Support	SMS, GPRS (UDP)
Cellular/PCS	FCC -- Parts 22, 24; PTCRB
GPRS	Up to class 12
Quad Band	850/900/1800/1900 MHz

COMPREHENSIVE I/O

Inputs	
Status LEDs	GPS and Cellular

MOUNTING

Standard Tie-wrap or Screw Mount

Works With: iPhone, iPad, Droid

Live GPS Vehicle Tracking Device RTV-5

[Hardwired Units]

Do you know where your vehicle(s) and driver(s) locations are at any given time? When did your employees arrive at a job site or delivery location? What time did your employees start/end their shift? How long did they take for lunch? How long were they stopped at a particular location? If your employees take your company vehicles home, are they doing any unauthorized driving? Were your company vehicles excessively idling? If so, for how long? Are your vehicles going to places you forbid? Are your vehicles speeding?

- Business Owners: Secure, Optimize And Make Improvements To Your Company's Bottom Line
- Service Companies: HVAC, Plumbing Enhance Customer Service
- First Responders: Police, Paramedics, Security Companies Efficient Dispatching
- Trucking Companies: Know Precisely Where Cargo Is At All Times
- Family: Keep Your Family Safe & Secure



LIVE TRAC RTV-5

- Cutting Edge GPS Technology
- Historical Playback
- Web Based GPS Tracking
- Detailed Operating Reports



PHYSICAL SPECIFICATIONS

Dimensions	4 x 3.5 x 1.1 inches 102 x 89 x 25 mm
Weight	8 ounces 227 grams
GPS antenna conn.	SMA
Cellular antenna conn.	SMC
Power Connector	20-pin 3mm Molex

ELECTRICAL SPECIFICATIONS

Operating Voltage	8 to 30V DC
Power Consumption	
Operating	<100mA @ 12V DC
Standby	<13mA @ 12V DC
Sleep	<1mA @ 12V DC

ENVIRONMENTAL SPECIFICATIONS

Operating	-4° to 140°F (-20°C to 60°C)
Functional	-4° to 158°F (-20°C to 70°C)
Storage	-40° to 185°F (-40°C to 85°C)
Humidity	5 to 95% non-condensing
Shock and Vibration	SAE J1455
EMC/EMI	SAE J1113

GPS TECHNOLOGY

GPS	12 channel (with WAAS/SBAS)
Sensitivity	--160dBm tracking
Horizontal Accuracy	2.5, 2.0m SBAS (CEP 50%)

Works With: iPhone, iPad, Droid

Live GPS Vehicle Tracking RTV-20

[Hardwired Units]

The Live Trac Nav RTV-20 is a dedicated GPS tracking system that is optionally programmed to work with a Garmin Nuvi navigation unit. This integration will allow for two way messaging between the office and drivers, dispatching of drivers, as well as turn-by-turn directions for the driver.

We think one of the best features of the RTV-20 is the ability to dispatch drivers. Simply type an address you would like to send your driver to, and the navigation unit will store the address until your drivers are ready to proceed to that specific location. The RTV-20 is a standalone GPS tracking device, which on its own will update its position every 5 or 10 seconds when moving over a couple miles per hour.

Customers wishing to use the Garmin Nuvi navigation unit must purchase the proprietary patch cable, as well as supply their own Garmin Nuvi units (will work with Garmin Nuvi Models 255, 265 and 465 only).



LIVE TRAC RTV-20

- Monitor Your Vehicles From Any Web Enabled Computer, iPhone Or Droid Phone
- Watch Your Vehicles Live - Know Current Speed,
- Direction Of Travel & Location
- Receive Speed & Boundary Alerts To Any E-mail Or Cellphone Via Text Messaging

- Live GPS Tracking
- Dispatching
- Navigate & Communicate

Garmin Nuvi
(Optional)



PHYSICAL SPECIFICATIONS

Dimensions 4" L x 2" W x .93" H
Weight 3 ounces
GPS Antenna GPS/GSM Combo
Power Connector 20 pin Molex

ELECTRICAL SPECIFICATIONS

Operating Voltage 9 to 30 VDC
Power Consumption
Operating 75 mA at 12 VDC
Deep Sleep 3mA at 12 VDC

GSM FREQUENCY

Quad Band Class 12 GPRS Modem
850 MHz (Class 4) – 2W
900 MHz (Class 4) – 2W
1800 MHz (Class 1) – 1W
1900 MHz (Class 1) -1 W

ENVIRONMENTAL SPECIFICATIONS

Operating -22 to 149° F
Storage -40 to 185° F
Humidity 0% to 90% relative humidity, non-condensing

SHOCK & VIBRATION

SAE Test: SAE J1455 Compliant
Mil Standard 202G and 810F Compliant
Ground vehicle environment with associated shock and vibration

EMC/EMI

SAE Test: SAE J1113 Parts 2, 12, 21 and 41 Compliant
FCC Part 15B Compliant
Industry Canada Compliant
EMC compliant for a ground vehicle environment

GPS TECHNOLOGY

GPS 50 Channel Was Capable GPS Receiver
Sensitivity -168 dBm tracking sensitivity

Works With: iPhone, iPad, Droid

Live Trac PT-10 Series

[Portable/Battery Powered]

“The Most Accurate, Easy To Use GPS Tracker Available.”

-GPS Magazine, April 2009



The Live Trac PT-10 GPS Tracker series is simply amazing! Unlike other GPS trackers that update in minutes, the PT-10 UPDATES every 10 Seconds when traveling over 10 mph - or every 20 feet when walking!

- GPS Tracker With Ultra-Fast Updates
- Portable GPS Tracker
- Motion Activated GPS Tracking



Product Overview

	Standard PT-10	PT-10 Professional	PT-10 Pro Plus	PT-100
Update Frequency	20' or Every 10 Sec Over 10 MPH	20' or Every 10 Sec Over 10 MPH	20' or Every 10 Sec Over 10 MPH	20' or Every 10 Sec Over 10 MPH
Battery Size	1.3 Ah	9.2 Ah	14 Ah	17 Ah
Motion Hours	8 Hours	60 Hours	100 Hours	130 Hours
Drive Time @ 1 Hr Per Day	8 Days	2 Months	3.3 Months	4.3 Months
Magnetic Mount Case	Available Option	Included	Included	Included
Dimensions	3.5" x 2.08" x 0.75"	5" x 4" x 2.75"	5" x 4" x 2.75"	7.5" x 4" x 2.75"
Waterproof	No	Yes	Yes	Yes
Refer To	Page 9	Page 10	Page 11	Page 12

Live Portable GPS Tracker PT-10

[Portable/Battery Powered]

Whether you are tracking your child, an elderly parent, your teen driver or even your company vehicles, the PT-10 is the easiest LIVE Internet GPS tracking device to use in the world.

- Super-Fast Updates Are The Next Best Thing To Real Time!
- You Can Watch The PT-10 From Anywhere In The World
- Built For Hours Of Extended Operation
- The Most Portable Device Of Its Kind!
- Completely Rechargeable
- Logs And Stores All Positions For Easy Playback
- Get Customized Alerts And Notifications
- Easier To Use Than A Cell Phone!
- Low Monthly Subscription - NO CONTRACTS!



LIVE TRAC PT-10

- #1 Rated By "GPS Magazine"
- Portable GPS System
- Easy To Use - Right Out Of The Box!



PHYSICAL SPECIFICATIONS

Dimensions	3.5" L x 2.08" W x 0.75" H
Weight	4 Ounces
Housing	Polycarbonate
Standard Battery	1300 mAh Rechargeable Li-Ion

ELECTRICAL SPECIFICATIONS

Operating Voltage	3.7V VDC
TX Power	2W

ENVIRONMENTAL SPECIFICATIONS

Operating	-4° to 140°F (-20°C to 60° C)
Functional	-4° to 158°F (-20°C to 70° C)
Storage	-40° to 185°F (-40°C to 85° C)
Humidity	Up to 95% non-condensing

GPS TECHNOLOGY

GPS	14 Channel
Sensitivity	-160 dBm tracking (SuperSensitive)
Horizontal Accuracy	>1m
Time-to-first-fix	70s (@ -130dBm)

CERTIFICATIONS

FCC	Parts, 2, 15, 22 & 24
PTCRB	Yes

OPTIONAL EXTENDED BATTERIES

Pro Battery	9.2 Ah Li-polymer (60 Hr Motion)
Mag Case Dimensions	5" L x 4" W x 2.75" H
100 Battery	17 Ah Li-Polymer (130 Hr Motion)
Mag Case Dimensions	7.5" L x 4" W x 2.75" H



Works With: iPhone, iPad, Droid

Live Trac PT-10 Professional

[Portable/Battery Powered]

Introducing the PT-10 Pro. Phenomenal GPS tracker with 60 hour battery!

10 Second Or Every 20' Position Updates! Our best selling PT-10 has just been injected with a state-of-the art lithium polymer battery system!

- Unlimited Live Tracking Via The Internet
- 60 Hour battery - Tracks Every 20' Or Every 10 Seconds
- Rechargeable Li-Polymer Battery
- Motion Sensor
- Historical Playback: Up To 90 Days - Everywhere Its Been!
- Waterproof Magnetic Mount Case (70 Lb Pull Magnet)
- No Contracts - Service Is Billed Month To Month!



LIVE TRAC PT-10 Pro



- Best Selling Portable Tracker!
- 60 Motion Hour Battery Life - 9 Amp Hour Rating
- Unparalleled Reliability

PHYSICAL SPECIFICATIONS

Dimensions	5" L x 4" W x 2.75" H
Housing	Polycarbonate
Weight	4 Ounces
Standard Battery	1300 mAh Rechargeable Li-Ion

ELECTRICAL SPECIFICATIONS

Operating Voltage	3.7V VDC
TX Power	2W

ENVIRONMENTAL SPECIFICATIONS

Operating	-4° to 140°F (-20°C to 60° C)
Functional	-4° to 158°F (-20°C to 70° C)
Storage	-40° to 185°F (-40°C to 85° C)
Humidity	Up to 95% non-condensing

GPS TECHNOLOGY

GPS	14 Channel
Sensitivity (SuperSensitive)	-160 dBm tracking
Horizontal Accuracy	>1m
Time-to-first-fix	70s (@ -130dBm)

CERTIFICATIONS

FCC	Parts, 2, 15, 22 & 24
PTCRB	Yes

OPTIONAL EXTENDED BATTERIES

Pro Battery	9.2 Ah Li-polymer (60 Hr Motion)
Mag Case Dimensions	5" L x 4" W x 2.75" H
100 Battery	17 Ah Li-Polymer (130 Hr Motion)
Mag Case Dimensions	7.5" L x 4" W x 2.75" H

Works With: iPhone, iPad, Droid

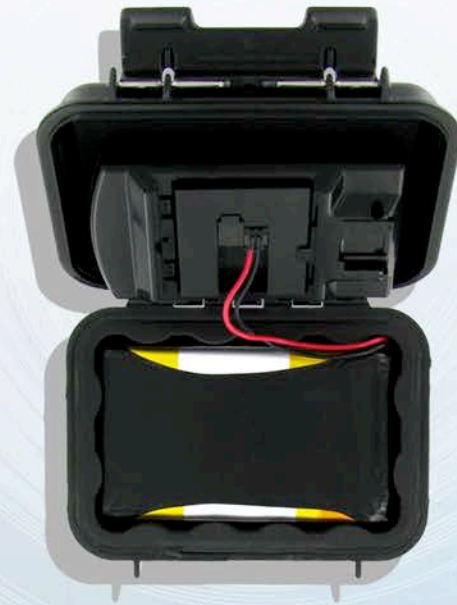
Live Trac PT-10 Pro Plus

[Portable/Battery Powered]

The PT-10 Pro Plus will track vehicles, cargo, machinery for extended periods of time. For example, the PT-10 Pro Plus will track a vehicle that drives one hour per day, for over 3.3 months! Built-in motion sensor shuts off to conserve battery life when the PT-10 Pro Plus is not moving.

Battery life is determined by actual motion hours - expect about 100 hours of live GPS tracking on each charge.

- 14 Ah Extended Rechargeable Battery Pack - Lasts For Over 100 Motion Hours
- Unlimited Live Tracking Via The Internet
- 90 Day Route Playback Of Exactly Where The PT-10 Pro Plus Has Been
- Waterproof System And Hardened Magnetic Mount Case
- Position Updates That Are Accurate Up To Eight Inches



LIVE TRAC PT-10 Pro Plus

- Compact GPS Tracker
- 100 Motion Hour Battery Life - 14 Amp Hour Rating
- Deploys In Seconds

PHYSICAL SPECIFICATIONS

Dimensions	5" L x 4" W x 2.75" H
Housing	Polycarbonate
Weight	4 Ounces
Standard Battery	1300 mAh Rechargeable Li-Ion

ELECTRICAL SPECIFICATIONS

Operating Voltage	3.7V VDC
TX Power	2W

ENVIRONMENTAL SPECIFICATIONS

Operating	-4° to 140°F (-20°C to 60° C)
Functional	-4° to 158°F (-20°C to 70° C)
Storage	-40° to 185°F (-40°C to 85° C)
Humidity	Up to 95% non-condensing

GPS TECHNOLOGY

GPS	14 Channel
Sensitivity (SuperSensitive)	-160 dBm tracking
Horizontal Accuracy	>1m
Time-to-first-fix	70s (@ -130dBm)

CERTIFICATIONS

FCC	Parts, 2, 15, 22 & 24
PTCRB	Yes

OPTIONAL EXTENDED BATTERIES

Pro Battery	9.2 Ah Li-polymer (60 Hr Motion)
Mag Case Dimensions	5" L x 4" W x 2.75" H
100 Battery	17 Ah Li-Polymer (130 Hr Motion)
Mag Case Dimensions	7.5" L x 4" W x 2.75" H

Works With: iPhone, iPad, Droid

Live Trac PT-100

[Portable/Battery Powered]

GPS Tracker With Motion Activated 130+ Hour Live Motion Tracking! 17 Amp Hour Rechargeable Li-Polymer Battery Pack - A LiveViewGPS Exclusive!

Track Anyone Or Anything With The PT-100 - Streaming Data Updates Positions Live - Every 10 Second Or Every 20'! Using A State Of The Art 17 Amp Hour lithium polymer battery! The PT-100 is the fastest updating GPS system on the Planet, With The Longest Battery Life Available...

- Unlimited Live Tracking Via The Internet
- 130 Hour Battery - Tracks Every 20' Or Every 10 Seconds
- Rechargeable Li-Polymer Battery
- Motion Sensor Activates Live Tracking
- Historical Playback: Up To 90 Days - Everywhere Its Been!
- Waterproof Magnetic Mount Case (Dual 70 Lb Pull Magnet)
- No Software To Load - 100% Web Based System



LIVE TRAC PT-100

- Extremely Long Battery Life - 17 Amp Hour Rating
- Customized Dual Magnetic Mount Case
- Covert GPS Tracking



PHYSICAL SPECIFICATIONS

Dimensions	7.5" L x 4" W x 2.75" H
Housing	Polycarbonate
Weight	4 Ounces
Standard Battery	1300 mAh Rechargeable Li-Ion

ELECTRICAL SPECIFICATIONS

Operating Voltage	3.7V VDC
TX Power	2W

ENVIRONMENTAL SPECIFICATIONS

Operating	-4° to 140°F (-20°C to 60° C)
Functional	-4° to 158°F (-20°C to 70° C)
Storage	-40° to 185°F (-40°C to 85° C)
Humidity	Up to 95% non-condensing

GPS TECHNOLOGY

GPS	14 Channel
Sensitivity (SuperSensitive)	-160 dBm tracking
Horizontal Accuracy	>1m
Time-to-first-fix	70s (@ -130dBm)

CERTIFICATIONS

FCC	Parts, 2, 15, 22 & 24
PTCRB	Yes

OPTIONAL EXTENDED BATTERIES

Pro Battery	9.2 Ah Li-polymer (60 Hr Motion)
Mag Case Dimensions	5" L x 4" W x 2.75" H
100 Battery	17 Ah Li-Polymer (130 Hr Motion)
Mag Case Dimensions	7.5" L x 4" W x 2.75" H

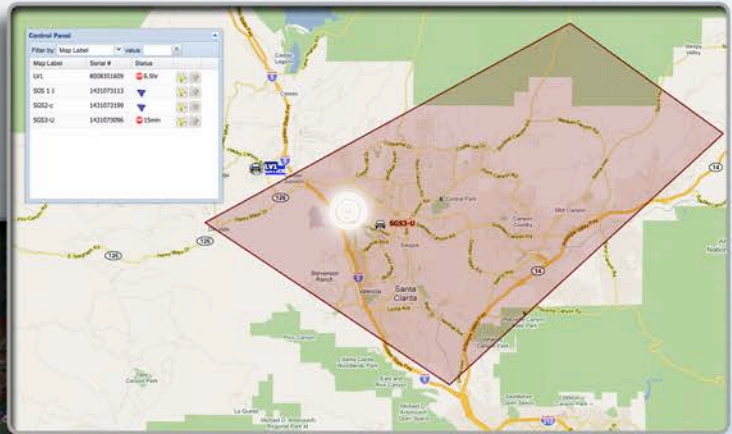
Works With: iPhone, iPad, Droid

VLS GPS Vehicle Tracking System

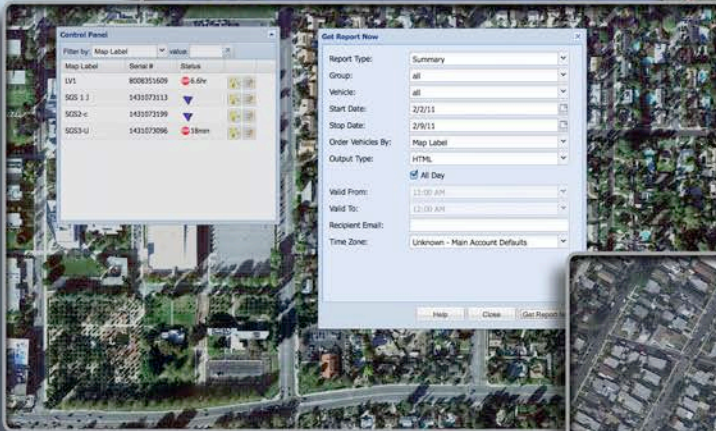
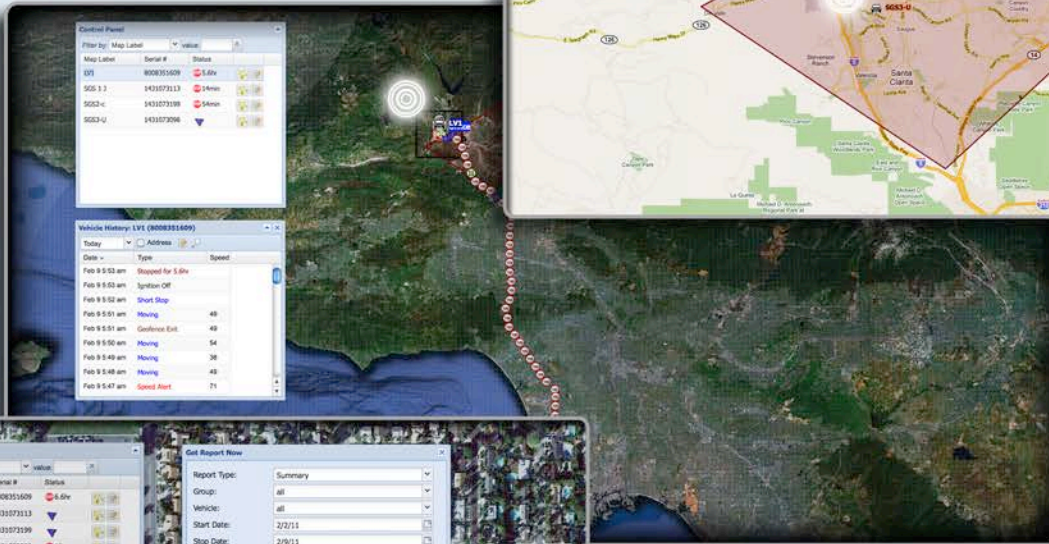
Real-Time Vehicle Tracking System

- Know Exactly Where Your Vehicle Is And Where It Has Been
- Set Up GeoFences... Be Alerted When Your Vehicle Enters These Areas
- Locate On Demand
- Automatic Alerts, Detailed Reporting
- Store And Forward Enabled - Never Lose Data

Fleet Management

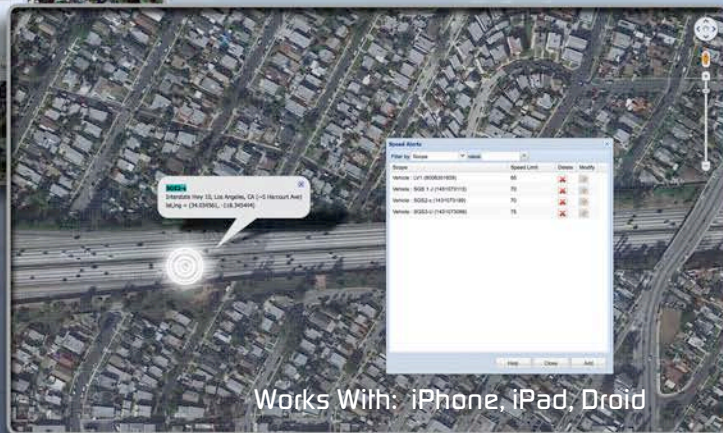


Fleet Tracking System



Alerts: Speed, Zone, After Hours Driving

Detailed Vehicle Operation Reports



Works With: iPhone, iPad, Droid



Vehicle Tracking System VLS-300

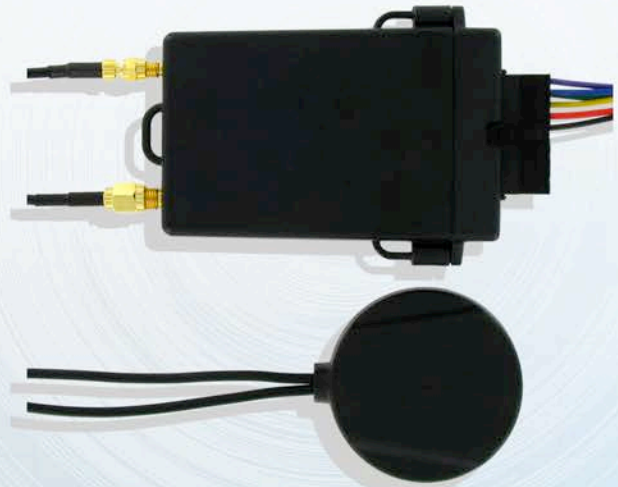
[VLS Hardwired Units]

The VLS-300 is a hardwired vehicle tracking system. Installation is a simple 3 wire hookup. The VLS-300 can be configured to update from 1-5 minutes. It is also programmed to store and forward information, should the device lose GSM coverage (3000 events). You can also locate the VLS-300 up to 100 times on demand per month if needed.

The VLS-300 will report all starts/stops, excessive idle times, speed alerts, zone alerts and even polygon zone alerts. State to state mileage reporting is also available.

Locate with any mobile phone - with phone's internal browser or by calling a special phone number and getting the vehicle's location.

- View All Vehicles At Once - Check Where They Have Traveled
- Received Detailed Stop/Move Mileage/Time Reports
- Detailed Maps Or Satellite Images, USA, Mexico And Canada
- Locate On Demand
- Disable The Starter
- Unlock Your Vehicles' Doors
- Speed Alerts / Geofence Alerts
- Hardwired - OBDII Interface Included



VLS-300

- Economically Priced
- Easily And Discreetly Installed
- Real Time Tracking With Store & Forward Capability



PRODUCT SPECIFICATIONS

- Dimensions: 4.55" L x 2.31" W x .87" H.
- Weight: 2.9 oz.
- GPS Receiver: L1 Frequency (1575.42 MHz) 12 channel.
- Antenna Size: 1.34" L x .99" W x .42" H.
- Operating Temperature: -22° F to +158 F.
- Voltage: +6 - 18 VDC.
- Wireless: GSM Quad band (850/900/1800/1900 MHz).

Vehicle Tracking System VLS-500

[VLS Hardwired Units]

For vehicles and light trucks built after 1997, plug device into OBDII port - You are done. Installation takes seconds! Set speed alerts, geo-fences, stop alerts and even odd hour operation. The VLS-500 is the size of a matchbox!

- Installs In Seconds
- Back-End Mapping System By Google Earth
- Fits Most Vehicles Manufactured After 1997
- Position Updates Every 5 Minutes When Moving
- Records All Ignition On/Off Events
- Records Stop Times & Duration Of Every Stop.



VLS-500

- Installs In Seconds
- Easily Transfer From Vehicle To Vehicle
- Recommended For Teen Drivers Or Small Fleets



PRODUCT SPECIFICATIONS

Frequency Band 850/1900 MHz
Transmit Power 33 dBm@ 850 MHz

GPS SPECIFICATION

- Receiver 16 channel
- Receiver Sensitivity -158 dBm
- Accuracy +/- 2.5m CEP
- Cold Start <38 sec
- Hot Start < 3 sec

NETWORK FUNCTIONALITY

- Auto-Register to GPRS network
- GPRS Class B, Multi-Slot 10
- Supports TCP, UDP and FTP
- OTA Firmware Upgrade Using FTP
- SMS connectivity

OBDII PROTOCOLS SUPPORTED

- J1850 PWM
- J1850 VPW

- ISO-9141-2
- ISO-14230 KWP2000
- ISO-15765 CAN

POWER REQUIREMENT

- D.C Power 10-16V
- GSM 850 80mA average @12V
- GSM 1900 75mA average @12V

Physical Connection

- OBD Connector J1962
- GPS Antenna Integrated
- Cellular Antenna Integrated dual-band (850-1900 MHz)

MECHANICAL

Case Material ABS plastic
Dimensions 1.8" X 1.5" X 1"
Weight <2 oz.
Operating Temperature -30°C to +75°C

DS-500 Mobile Alarm GPS Locator

[Battery / Hardwired]

For use in the US only - One of the most robust GPS Trackers ever built for theft prevention. Alarms with phone call to you on vibration, temperature and door contact. Can locate from any Web enabled computer, with the ability to also locate indoors. Battery life up to 30 days. Internal rechargeable battery. Alarm can be set for audible or silent mode. Unit can also be Armed/Disarmed on a set schedule.



MOBILELOCK DS-500

Alarm Notification

Protect Property

Recover If Stolen



Alarm Sensors

- Vibration
- Door Contact (up to 3/8" gap, tamper-resistant hall cell design)
- Tamper
- Low Temperature
- High Temperature

Sounds

- Alarm Siren
- Arm/Disarm
- Paging
- Power Connected/Lost

Attachment

- Built-in magnets
- Two mounting holes (#8 clearance)

Communications

Wireless programming and alarms via a CDMA cellular network using SMS & 1xRTT communication protocols

Power

- Internal battery for cordless operation
- Battery charger/adaptor

Mechanical

Size: 4.4" x 3.5" x 1.3" Weight: 250g (8.8oz)

Enclosure

- UV resistant plastic
- Rainproof
- Crush resistant to >500 Lbs
- Holding magnets force 14G's

- Vibration: Up to 500Hz random vibration 1.25G rms
- Temperature
- Operating: -20°C to + 60°C (-4°F to 140°F)
- Storage: -40°C to + 80°C (-40°F to 176°F)
- Temperature sensor range
- -18°C to 50°C +/-2°C (0F~122°F +/- 3.6°F)
- Humidity: <95% non-condensing

Battery

Type: Rechargeable Li-Ion

Size: 2x 18650

Runtime: 4 weeks **Recharge 5 hours **Life: >5 Yrs.

Designed so that it can be left plugged in for permanent powered applications without damage to internal battery

Location Technology

Location Technology: Qualcomm gpsOne™

Position Accuracy: Open sky: 5-10 meters (15 to 30 feet)

Impaired: <20 meters (<60 feet 95% of the time)

North American Frequency Bands

Cellular Band: Rx-869 through 894MHz, Tx-824 through 849MHzPCS

Band: Rx-1930 through 1990MHz, Tx-1850 through 1910MHz

* Preliminary Specifications: subject to change

** Typical/good conditions, RSSI, temperature, & usage

gpsOne is a trademark of QUALCOMM Incorporated

🎯 SX-1 Worldwide GPS Satellite Tracker [Portable/Battery Powered]

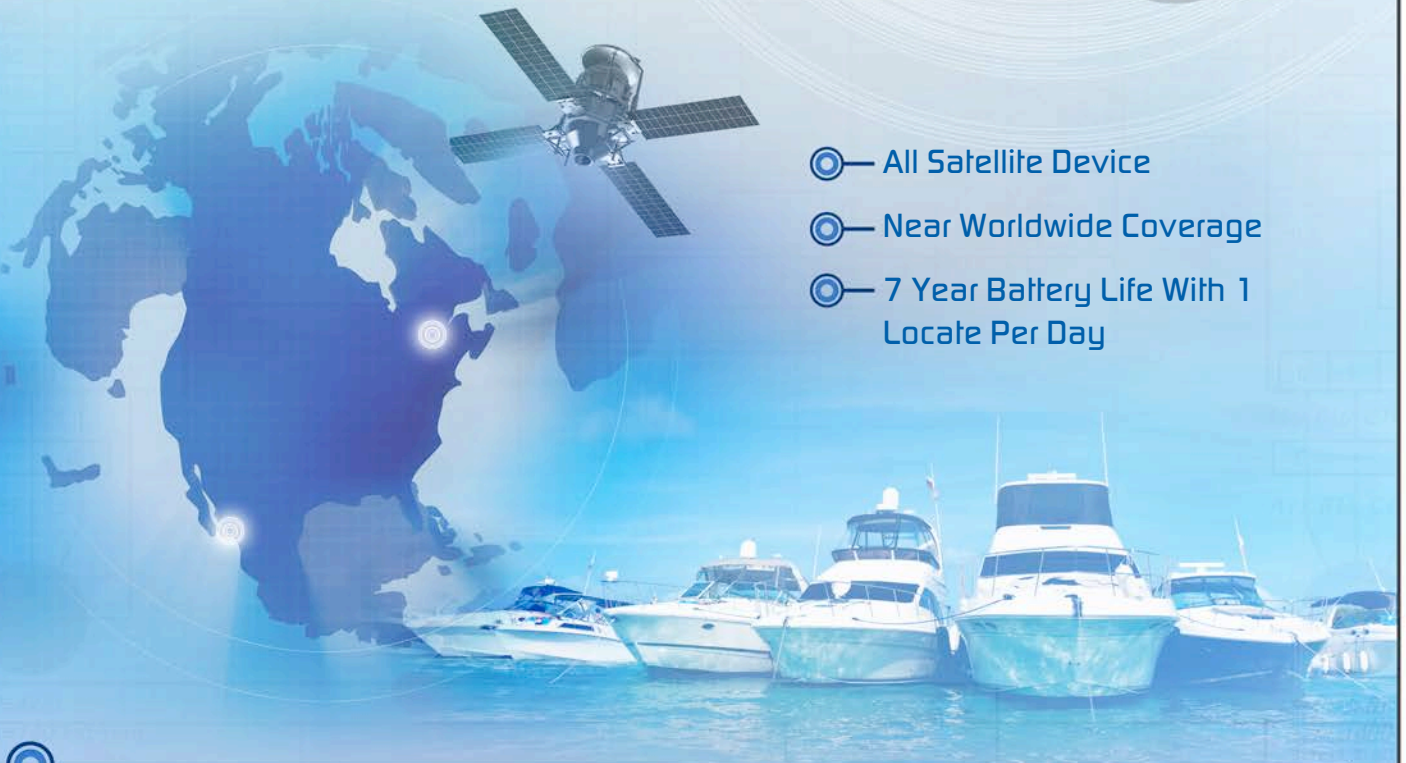
The LiveView Satellite Tracker (SX-1) represents a breakthrough in satellite-based asset monitoring and tracking technology. Works in remote areas - pure satellite based system. Position updates can be programmed for X amount of times per day. Motion sensor can be set to report on motion. Near Global Coverage - Web Based Tracking System. Primary Applications - Containers, Mobile Assets, Generators, Etc.

- Operating on Globalstar's Low Earth Orbit (LEO) Simplex Satellite Data Network
- GPS Visibility - Event Monitoring - Remote Asset Data - Near Global Coverage
- Track Assets On Motion - Time Track - Alarm Events - Engine Hours



SWX-1

- 🎯 All Satellite Device
- 🎯 Near Worldwide Coverage
- 🎯 7 Year Battery Life With 1 Locate Per Day



Innovative, Compact, Rugged Design Military Grade Specs:

With the industry's smallest footprint of only 7.25 x 3.25 x 1 inch (184 x 83 x 25 mm) and weighing only 13 ounces (369 g), the rugged SX-1 carries the highest environmental ratings available for any satellite or terrestrial tracking device.

Long-Life, Low Maintenance, Easy Install:

Delivering up to seven years (1 locate per day) of uninterrupted service on a single and easily field-replaceable lithium battery, the SX1 can be installed, activated and operational in less than one minute. The SX1 is able to track and monitor any asset nearly instantly. The SX-1 is the product of choice for applications requiring low-maintenance, long-life solutions.

GPS Data Logger

GPS Data Logger - No monthly fees! Position updates recorded to device as fast as every 10 seconds, distance, speed - Motion activated battery lasts up to 30 days. Device must be retrieved and data downloaded to your computer, where its route history can be viewed on a Google map. Device software is included.

- Shows You Up To 30 Days Of GPS Tracking
- Will Track Anyone Or Anything...
- On Land, Air, Sea - Walking, Running, Jogging...
- Shows You On A Google Map Where It Has Been
- Works Anywhere On Planet Earth



GPS DATA LOGGER

- No Monthly Fees
- Motion Activated Logging
- 30 Hrs On A Single Charge (1 Hr. Per Day Of Motion)

PRODUCT FEATURES

- Built-In Motion Activated GPS Logger
- Small Form Factor: 1.5" x 1.5" x .05"
- Battery Life @ 1 Hr Driving Day = 30 Days Of Operation
- Stores Up To 120 Hrs Of Data
- Includes Magnetic Mount Case For Vehicle Tracking
- Multiple Report Formats To Export Data (PDF, HTML, CSV, MS-WORD, And More)
- Water Resistant For Use Outdoors
- Built-In Rechargeable 750 mAh Li-ion Battery
- Weight 1.3 Ounces
- Cold Start Satellite Acquisition Time >35 Seconds
- 64 Mb on board memory
- USB 1.1 and 2.0 Compatible.

BlackBerry Tracking Software

Transform your Blackberry Smartphone into a GPS tracking device! Simple software download, and your Blackberry becomes a GPS tracker. (Does not work with Verizon phones).

Accurately keep track of your mobile workforce, know where your sales people, representatives, company workers are and where they have been.

- Location Updates Viewable On Google Mapping
- Geo-Fence Alerts
- Fast & Easy Installation



BLACKBERRY TRACKING

- Works Worldwide
- Inexpensive
- Panic Button Enabled

PRODUCT FEATURES

- Panic Button
- Download Directly To Phone
- Capable Of Remote Deployment To 1 Or 1000 Phones
- Tracking software runs seamlessly in background
- Works Worldwide

MINIMUM DEVICE REQUIREMENTS

- Windows Mobile 6.0 or BlackBerry OS 4.2
- Built In GPS Chipset
- Active Data Plan and phone number for the device.

Covert GPS Tracker PT-8100N

The LiveViewGPS PT-8100N, powered by Qualcomm inGeo™ platform, is a small, value-priced, tracking and monitoring device. The inGeo-enabled unit along with the LiveViewGPS portal service provides an end-to-end solution for dedicated consumer and enterprise-class covert tracking applications. Based on gpsOne™ assisted location-position technology, the PT-8100N tracker operates in impaired environments with no clear view of the sky. Examples include inside buildings, embedded in high-value cargo, and hidden under vehicles. Superior battery management sets the PT-8100N apart. The inGeo™ platform operates on Qualcomm patented “Low Duty Cycle” technology which provides unique hibernation capability that produces best-in-class operation and standby time.

- Works outdoors and indoors such as inside buildings, elevators, even through secure containers.
- Internal GPS and cellular antenna.
- Provides real-time location tracking and monitoring info:
 - On demand
 - Periodically per schedule
 - One rate while moving and another while stationary
 - By designated service area using device-based geo fence.
- Easy to use. Services can be configured over-the-air remotely.
- Flexible deployment scenarios including tracking and monitoring packages, valuable assets, and personnel.

[Portable/Battery/Hardwired]



PT-8100N

 *Locates Accurately & Quickly*

 *Small Form Factor*

 *Long Battery Life*



Size: (H) 2.75" x (W) 1.6" x (D) 0.6"

Weight: 1.76 ounces

Battery Capacity:

- 720 mAH (internal)
- 4,000 mAH (external, requires case)
- 10,000 mAH (external, requires case)
- Remotely configurable
- Sleep Mode to save power

Motion Detection: Vibration sensor enables separate in-motion and stationary rates

Interfaces:

- Two LED indicators (battery & link status)
- Status/On/Off push button

Hardware Platform:

- Qualcomm MSM6125™
- M36W0R6050 (8 MB NOR + 4MB PSRAM)

Network Modes:

- CDMA 2000
- 800 MHz and 1900 MHz
- SMS command and response

GPS Modes:

- Mobile Set Based Locate (MSBL)
- Mobile Set Assisted Located (MSAL)

Operating Modes

- On demand (Single locate or “ping”)
- Fixed, periodic reporting rate
- Separate in motion and stationary rates
- In device geofence rate

Standards

- IS-95A/B
- IS-2000 (1X) Release 0 and Release A
- IS-637 (SMS)

Waterproof & Environment

- IP50
- Temperature
 - -20°C to +60°C (Standard operation)
 - -40°C to +85°C (Storage)
- Humidity
 - 0-85% (Non-Condensing)

Powered by Qualcomm inGeo™ Platform

Covert GPS Tracker PT-8500

[Portable/Battery/Hardwired]

The LiveViewGPS PT-8500 Covert Tracker, powered by the Qualcomm inGeo™ platform, is a small, value-priced, location tracking and sensor monitoring device. Along with the LiveViewGPS online “track and trace” service, the PT-8500 provides a complete solution for dedicated consumer and enterprise-class covert tracking applications. Based on gpsOne™ assisted location-position technology, the PT-8500 tracker operates in impaired environments with no clear view of the sky. Examples include inside buildings, embedded in high-value cargo, and hidden under suspect vehicles. Superior battery management sets the PT-8500 apart. The inGeo™ platform operates on Qualcomm’s patented “Low Duty Cycle” technology which provides unique hibernation capability that produces best-in-class operation and standby time.



PT-8500



Wide Range of External Battery Options

Ideal for Motion Detection

Works Outdoors & Indoors

Size: (H) 2.5” x (W) 1.0” x (D) 0.625”

Weight: 0.8 ounces without battery

Battery Capacity:

- 1.4 AHr Lithium-ion (pill bottle configuration)
- 4, 10 or 20 AHr Lithium-ion (external carrying case recommended)
- Note: Remotely configurable Hibernation Mode saves power while stationary

Motion Detection:

- Electronic 3D accelerometer enables motion dependent reporting rates and alerts
- Inferred motion status via the LiveViewGPS portal

Interfaces:

- Two LED indicators (battery & link status)
- Status/On/Off push button

Hardware Platform:

- Qualcomm QSC6055™

External Power Connectors

- Battery: 3.4 to 4.3 Volts
- 5 Volt external DC
- Optional vehicle power converter accessory (10-30 Volts stepped down to 5 Volts)

Interfaces

- 5 Volt digital
- Inter-integrated circuit (I²C)
- 4-20 mA current sensors

- Analog input sensor

Internal Antennas

- Integrated GPS and Cellular
- Zigbee (optional)

Radio & Network Modes

- CDMA 2000
- US Cellular (800 MHz) and US PCS (1900 MHz)
- ISM Zigbee (2.45 GHz) (optional)
- SMS and TCP command and TCP/IP response (less prone to delays)

GPS Modes and Sensitivity

- Autonomous GPS (-152 dBm)
- User Plane MS Assisted (-155 dBm)
- Control Plane MA-Assisted (-159 dBm)

Water Resistance & Environment

- Temperature
-20°C to +60°C (standard operation)
-40°C to +85°C (storage)
- Humidity
0-35% (non-condensing)

Standards

- IS-95A/B
- IS-2000 (1X) Release 0 and Release A
- IS-637 (SMS)

Powered by Qualcomm inGeo™ Platform



29021 Ave Sherman, Ste. 103
Valencia, CA 91355



www.LiveViewGPS.com

Toll Free: 888.544.0494



29021 Ave Sherman, Ste. 103
Valencia, CA 91355

PRICE SHEET

Product	Price	SKU
Live Trac PT-10	\$399.00	PT-10
LiveTrac PT-10 Professional	\$599.00	PT-10 Pro
Live Trac PT-10 Pro Plus	\$699.00	PT-10 Pro Plus
Live Trac PT-100	\$799.00	PT-100
Live Trac G5 Vehicle Tracking	\$349.00	G5
Live GPS Vehicle Tracking RTV-5	\$399.00	RTV5
Live Trac Nav RTV-20	\$399.00	RTV20 Tracking Box
Live Trac Nav RTV-10	\$599.00	RTV10-NavTrac
VLS-300 Vehicle Trac	\$289.00	VLS300
VLS-500 Vehicle Trac	\$329.00	VLS500
SX-1 Worldwide GPS Satellite Tracker	\$399.00	SX1
DS-500 Mobile Alarm GPS Locater	\$389.00	Mobilelock DS500
GPS Data Logger	\$189.00	GPS Data Logger
Blackberry Tracking	\$9.95 Per Device	BBTrack
PT-8100 Covert Tracker	\$149.00	PT-8100N
PT-8500 Covert Tracker	\$289.00	PT-8501X



